

# New Castle Community Survey

## Project Engagement

VIEWS	PARTICIPANTS
641	178
RESPONSES	COMMENTS
7,664	813
SUBSCRIBERS	
80	

## 1. What do you like about living in New Castle?

Scenic, safe village community

one month ago

[👍 20 Agree](#)

small town atmosphere and charm

one month ago

[👍 18 Agree](#)

Historic charm

one month ago

[👍 16 Agree](#)

Small town mentality, beautiful landscape, and ocean proximity.

one month ago

[👍 6 Agree](#)

low taxes, charming New England ambiance, close to town, close to the beach

one month ago

[👍 5 Agree](#)

Small town feel, the people, idyllic ocean location. proximity to Portsmouth, Boston and mountains, as well as the schools.

one month ago

[👍 5 Agree](#)

It's beauty, peacefulness and being close to the water.

one month ago

[👍 5 Agree](#)

Historic charm, and peacefulness.

one month ago

[👍 5 Agree](#)

It's very scenic, active and safe. There is a lot of history and charming houses.

one month ago

[👍 4 Agree](#)

Charming village community with amazing scenery.

one month ago

[👍 4 Agree](#)

people know each other, easy to get involved and make a difference in what happens in town, history of the town

one month ago

[👍 4 Agree](#)

small-town ,historic ,ocean/river side community. real neighborhood ambience, though this is threatened by high prices changing demographics

one month ago

[👍 3 Agree](#)

It feel like home. A true representation of community. Lots of kids, small families, established elders, recognizable civil servants and town professionals. Historic preservation. Seaside community.

one month ago

[👍 3 Agree](#)

I love the community. Knowing the neighbors, I especially love the school... the hockey rink in the winter, the New Castle Fun run, families joining together to make this such a lovely place to live.

one month ago

[👍 2 Agree](#)

The elegant charm of the unique, beautiful and diverse geography, water views/access, activities and sense of community with the other residents

one month ago

[👍 2 Agree](#)

It has a colonial village, two lighthouses, two historic forts, Walbach tower, houses dating back to the 1600s, the historic Wentworth Hotel, its own beach, a beautiful river and on and on. Incredible place to live.

one month ago

[👍 2 Agree](#)

It is safe, rather quiet, and absolutely beautiful. I love that nature is allowed to thrive and is protected. People understand that coyotes and bobcats are part of the natural ecosystem and needed. People are respectful of each other. Of course, proximity to the ocean probably tops the list.

one month ago

[👍 2 Agree](#)

I love the small town charm in which you can make a difference with your vote and willingness to volunteer. Of upmost importance to this small town charm is MHT elementary school. We have 3 adult kids who were fortunate enough to attend MHT. The school was like a family to the kids and will forever tie them to the community. MHT is one of the core pillar to our community and is the biggest draw for young families to New Castle. The library and the Common are also key municipal pillars to New Castle. The town wouldn't be the same without any one of these 3 assets. We are also blessed with the natural and historical beauty that surrounds us.

one month ago

[👍 1 Agree](#)

The beautiful old homes and winding roads and the river and ocean views, plus the kindness of residents to each other, the elementary school which draws younger families to the area, having a church, post office, and cafe'. The fact that the small town atmosphere and historic houses have been saved. I appreciate that there is an organization that works to preserve the traditions, which is trying to improve the ability of people to walk safely in the town by working to improve walkways.

one month ago

[👍 1 Agree](#)

Extend SafePath to the Commons

one month ago

[👍 1 Agree](#)

Elitism, sense of entitlement that comes from living in a town with such little diversity. I can see myself in all of my neighbors.

one month ago

[👍 1 Agree](#)

We're a small community that will never grow into a large community or a city. Driving over the causeway and bridges, surrounded with water is a calming effect every time I return to the island. There are many friendly residents. We have the ability to make "post office" friends, a very nice social outlet. We have an outstanding elementary school which helps to prevent New Castle from turning into an exclusive "well to do retired wealthy citizens" community. Younger people moving to New Castle is great.

one month ago

[👍 1 Agree](#)

Quiet and Safe

one month ago

[👍 1 Agree](#)

Proximity to Portsmouth, water access, safety, great school, friendly people, and low taxes.

one month ago

[👍 1 Agree](#)

Safe, friendly community.

one month ago

[👍 1 Agree](#)

Everything! Beauty, neighbors, history.

one month ago

[👍 1 Agree](#)

Quiet charm,

one month ago

[👍 1 Agree](#)

Living in a small community provides a sense on security, and ability to easily know your neighborhood. There is an autonomy that comes from living on an island.

one month ago

[👍 1 Agree](#)

See above.

one month ago [👍 1 Agree](#)

small connected community on the water is an idyllic town that is one the most attractive towns anywhere in New England

one month ago

[👍 1 Agree](#)

Small town, historic atmosphere, location

one month ago

[👍 1 Agree](#)

Both natural and historic beauty, as well as friendly small town feel.

one month ago

[👍 1 Agree](#)

Historic Charm and small community on an island near Portsmouth

one month ago

[👍 1 Agree](#)

Beautiful slice of heaven - walking to Forts, biking all around island, cared for gardens, pride in ownership, kind neighbors, I can go on & on

one month ago

[👍 1 Agree](#)

Visually it is a beautiful place with some amazing wildlife. It has proximity to river and tidal waters as well as major metropolitan areas

one month ago

[👍 1 Agree](#)

Small town; sense of community

one month ago

[👍 1 Agree](#)

The beauty, and the relative isolation from the building madness which is happening in Portsmouth

one month ago

[👍 1 Agree](#)

Peace and quiet (sort of). Natural beauty. Relatively low population density. Historic significance.

one month ago

[👍 1 Agree](#)

Safe, clean and quiet

one month ago

[👍 1 Agree](#)

small town feel, safe and walkable community

one month ago

[👍 1 Agree](#)

Modern architecture, young demographic, cultural and economic diversity.

one month ago

[👍 1 Agree](#)

I love it small-town nature. I am especially happy that we preserve its historic homes. That we are a mini democracy is especially important to me as in our town meeting each year.

one month ago

[👍 1 Agree](#)

Beautiful natural landscape. Near the ocean. Small town feel. Close knit community with a strong sense of community. Lovely neighbors. Wholesome school community that feels like family. MHT is an amazing place for kids to learn and grow. Historic charm. Close to the culture of downtown Portsmouth.

one month ago

Proximity to ocean and Portsmouth. Water views when walking, friendly neighbors

one month ago

Peaceful, serene water views, proximity to ocean, friendly atmosphere

one month ago

feeling of community and safe area

one month ago

sense of community and a feeling of being safe

one month ago

Ideal geography, environment, friendly people, historic charm

one month ago

Small town seacoast atmosphere & walkability.

one month ago

Ocean access and unique, historical New England island experience...

one month ago

Visual and physical access to the coast, safe neighborhoods and small town feel, involved community, high quality public school, aesthetic appeal of town, "right-sized residential development": few gigantic and ostentatious homes despite high collective wealth.

one month ago

The variety of its natural resources and its unique history

one month ago

Small town, tight knit community. Historically important.

one month ago

Naturally beautiful, amazing history, great community.

one month ago

The history as a Colonial fishing village, it's importance during the Revolution, WW I and WW II, close proximity to the water and the architecture.

one month ago

Natural beauty and historic charm

one month ago

Small town friendliness and flexibility

Access to the water

one month ago

Neighborhood feeling, closeness to river and ocean, its history, historic houses,

one month ago

small town community, historical elements. Scenic ocean/river proximity and access. I love our active library, the New Castle Commons and beach. Our small community school is a gem.

one month ago

small community, beautiful scenery, access to ocean. Love Great Island Commons and Beach. Wonderful, active library. Terrific school

one month ago

Historic, small town, neighborly, close to the sea, beautiful.

one month ago

I like the small town feel and the familiarity of the community. I like being close to the river and the ocean as well as the historic feel of a quintessential New England village. I also enjoy the proximity to the larger towns/cities, amenities like the Wentworth as well as access to the lakes and mountains of upstate NH/Maine. Have to say, I also enjoy the low taxes!

one month ago

Small historic ocean community

one month ago

So many things beyond the obvious beauty of the natural environment which we are so fortunate to be surrounded by. The importance of honoring historical landmarks, and the people who have made time to head the cause itself. The home town feeling which I embrace which respects and supports keeping this amazing location protected so we never lose what it is that makes you actually smile each time you return... and last but not least proudly calling this our home

one month ago

Test

one month ago

quiet and safe

one month ago

spirit of volunteerism

one month ago

Close to PORTSMOUTH, on the water

one month ago

Low taxes. We're all close to the water

one month ago

The community is so wonderful. The church and guild, the Christmas fair, the garden club, the town library and the Historical Museum and Society with historic lectures are just a few of the connections to a vibrant community. I love the value of preserving our town history including Fort Stark and Fort Constitution.

one month ago

Tight knit community, coastal location, strong school, historic buildings

one month ago

The beauty-both architecture and natural beauty, accessibility to Portsmouth and other seacoast places, my friends. For children- The ability to move around town and not having to worry or be scared.

one month ago

The beauty of the island, the ocean and back channel views. Proximity to the water and boating.

one month ago

Well managed small town with scenic beauty.

one month ago

Proximity to downtown portsmouth & being on the water.

one month ago

A safe scenic community with wonderful people.

one month ago

The people. A great supportive community.

one month ago

The people! A great supportive community.

one month ago

safe community with wildlife and ocean access

one month ago

safe ,scenic, wildlife,ocean access

one month ago

small town

one month ago

small town, quaint, historic, beautiful

one month ago

Beautiful seascape, and historical streetscape.

one month ago

It's a part of important historical value in New Hampshire.

one month ago

The quiet nature and the friendliness of the residents

one month ago

I love this little town! It's a beautiful little gem, an island connected to the mainland by two bridges. It's the smallest town in NH, with the highest average property values and the lowest average property taxes. It's very well managed and always has been. The residents are friendly and committed to the future of their town.

one month ago

A historic close knit community.

one month ago

Proximity to outdoor activities, close to Portsmouth but not downtown, safe

one month ago

Unique town in terms of natural beauty and neighborliness.

one month ago

The beauty of the island and the way the residents of the island work together to manage the town.

one month ago

To many reasons! I've lived here 60 years New Castle is home.

one month ago

The connection with nature, whether the ocean, the back bay, or the areas around the water.

one month ago

small town vibe, downtown charm, town beach and Common, proximity to Portsmouth

one month ago

Small scenic town, sense of community and easy access to Portsmouth.

one month ago

The ocean!

one month ago

Beautiful quiet ocean island village.

one month ago

We grew up locally and spent a significant amount of time in town. It is a privilege to be able to live here as adults. Great feel and amenities.

one month ago

Its natural beauty, charm, history and small-town feel. Having the Common and Portsmouth nearby is also wonderful!

one month ago

My neighbors

one month ago

The year round nature of the community combined with the Seacoast beauty and historic charm

one month ago

Sense of community, access to water, Portsmouth.

one month ago

small town atmosphere, great walking

one month ago

Small town feel, beautiful town with all of it's winding roads, inlets, many varied water views and sense of community. The tax rate is a plus as well.

one month ago

The beauty.

one month ago

Small town. Historical houses. The community.

The river and ocean around us.

one month ago

It's calm and quiet. There's a sense of community. It's historic. It's pretty and (still) quaint. Easy to get out and exercise without going far.

one month ago

It is a physical island and a social island.

one month ago

It is a neighborhood, where you trust your neighbors.

one month ago

I am honored !

one month ago

I love the location and the natural beauty here. There are turkeys, deer, rabbits, coyotes, eagles, shorebirds, and we used to have fox. I think it's wonderful to have all living wild on our island.

one month ago

The quaintness of the land and the breadth of the people. I am proud to live in a town where " foreigners" say " I love New Castle.

one month ago



Done 2 times

one month ago

Again, the oversight by Town officials, community support and vitality of residents.

one month ago

Easy pace, frugal oversight and neighborhood support.

one month ago

Extraordinary place to live with the Ocean front access, wildlife and small town community. Limited population and nearly no growth potential makes it a stable place to live as well.

one month ago

TAXES ARE LOW

one month ago

The police are so respectful of town residents! They never pull us over and they never give us dog violations for our off-leash dogs.

one month ago

Community feeling of living in a village where neighbors care about their neighbors. Proximity to the water/beach

one month ago

Small town, good walking town, near the sea.

one month ago

Small town character/feel, and physical beauty of the town - or most of it.

one month ago

small town character and physical beauty.

one month ago

Small town; library; school; neighborhoods

one month ago

The smallish community where we can get to know our neighbors. It's near Portsmouth for the arts and dining. The small Post Office where they know us by name and mailbox number. The views--marshes, wild animals-turkeys, birds, and yes, even the deer. The coastline.

one month ago

It's near beaches. Near Portsmouth for entertainment and dining. People get to know each other. It feels safe. The views, ie. marshes, wild animals, the waters. The small Post Office where they know who we are as individuals and as PO Box Numbers.

one month ago

small community on the seacoast, that has been so far able to keep it's quaint New England character.

one month ago

Beautiful scenic small town

one month ago

The feeling of community

one month ago

History, architecture, walkable, beauty of the rivers and bays and ocean. An elementary school with a skating rink. Small village

one month ago

Small town, location and proximity to ocean and mountains

one month ago

The close-knit residential community in the center of the town. The historic nature of New Castle. The welcoming ethic of the townspeople. The climate. The town's beautiful setting.

one month ago

An amazing oasis of charm, history, ocean while close to Portsmouth

one month ago

Natural scenic beauty, small community feel, basic amenities and services available Town Hall, Library, School, Police/Fire, post office, water access and views, our Common space and beach.

one month ago

The town is small enough that citizens and community organizations look out for their neighbors

one month ago

Quiet and scenic away from the hustle and bustle of the city.

one month ago

The beauty, smallness and the genuine people

one month ago

friendly, welcoming neighbors, small town feeling, quiet streets, beautiful locale, local church, seaside town without tourist issues (e.g., all food places, cheap entertainment, non-residents everywhere, traffic). No STATE beach. Dog friendly, easy to walk around. Reasonable taxes.

one month ago

Rural lifestyle in a natural seascape with close proximity to cultural, retail and dining in adjacent towns.

one month ago

It is a beautiful island that needs to be preserved over time. Very historical with people that enjoy living here. The island is a hidden gem.

one month ago

Smallness

one month ago

Quiet

one month ago

The beautiful, peaceful surroundings, the proximity to Portsmouth, the access to the beach and the ocean. Our Town Commons park. The low property taxes and proximity to the Wentworth by the Sea marina and grounds to walk.

one month ago

Quiet setting, active village, good neighbors.

one month ago

The historic homes and streetscape. Proximity to services, shopping, Boston.

one month ago

Community, beautiful, convenient

one month ago

Nearly everything.

one month ago

Sense of community

one month ago

Sense of community.

one month ago

Small town feel

one month ago

Small village, incredibly friendly residents, quiet, diverse age groups.

one month ago

The beauty of the island, its history and the wonderful people.

one month ago

Being close to everything that I like to do.

one month ago

It's a small close knit town in a unique location on the NH seacoast. One which is still fiscal responsible but whose residents are socially responsible and want to know one another. Hoping we can keep it this way.

one month ago

A small close knit town which is in a unique location on the NH seacoast. A town which is fiscally responsible but where people are socially responsible and willing to help one another. Having childhood friends I grew up with here and making new friends I've made since moving back.

one month ago

Driving across the causeway and boating around the island

one month ago

I love being close to the river and the ocean, I love walking the island, I love the proximity to Portsmouth and Kittery, and most especially I love the people and their community spirit!

one month ago

I love being near the river and the ocean, I love walking the island, proximity to Portsmouth and Kittery, I love the PEOPLE and their community spirit!!!!

one month ago

Natural beauty, safety, nice people

one month ago

It's a colonial village, it has two lighthouses, the Wood Island Life Saving Station, Walbach tower, two historic forts, gorgeous houses, it's own beach, walking trails, the Wentworth Hotel, and on and on. It's fabulous and I live right in the village.

one month ago

Quiet, natural beauty, sense of community among my neighbors.

one month ago

I love the small town feel and historic charm. Close proximity to Portsmouth without worrying about massive development is the best of both worlds. Having a public park, beach, marina and two historic forts within walking distance is a treat. I hope we are able to preserve open space, wooded areas and wetlands so we continue to encounter a large variety of wildlife.

one month ago

See above

one month ago

Already have

one month ago

Small town: easy to deal with town hall functions: local politicians very available on street, by phone, etc.

Beautiful area with access to both sea and river, multiple boat launching areas

Positioned adjacent to Portsmouth that affords commercial activities: shopping, entertainment, arts, social societies, etc

Low taxes

Prize-winning school

Preservation of historic buildings

one month ago

Small, affluent community. Skewed to stability, without the difficult growth issues of land development projects. Lots of old people!

one month ago

A unique and beautiful living experience.

one month ago

Low Taxes, Ocean, History

one month ago

Community

one month ago

Quiet, safe, beautiful community

one month ago

Its uniqueness (made up of islands, etc.); character; people; geographic location; walk-ability; scenery; and size.

one month ago

Historic, quiet, charming, civilized. Interesting people.

one month ago

Proximity to ocean

one month ago

Small village feel, scenic area, wildlife, friendly & engaged residents, community involvement

one month ago

Peace and quiet. This is a place of refuge.

I like my neighbors. They are quality people who appreciate this.

one month ago

proximity to portsmouth, tight-knit community, beautiful location, safe, low taxes

one month ago

Small tight knit community.

one month ago

Peace and quiet. Lovely views. Warm and welcoming residents. No commercial spaces or billboards. Small town / village atmosphere. Easy walking / slow traffic. Historic charm. Historic local village church. Access to town events / notices via e-mail. Library. Historic society.

one month ago

small town feel, beautiful setting, neighbors know each other and care about the community, strong local school, local identity

one month ago

Walkability, close-knit neighborhoods, natural landscapes, protection of natural and public spaces

one month ago

It's quiet, the ocean has a calming effect and the tax rate is reasonable.

one month ago

History, geographic advantages (variety of marine environments, ledge, woods), availability of activities (boating, golf, tennis), proximity to Portsmouth & Maine, and its build and natural aesthetic.

one month ago

The historic and authentic sea side New Hampshire town feel.

one month ago

I grew up in a small New England town, and New Castle reminds me very much of that due to the kindness of the community and how people are always willing to help each other out.

one month ago

---

## 2. How important are the following in New Castle to you?

*If there are features not listed here that you feel are important please elaborate in the comment section.*

	<b>Very important</b>	<b>Somewhat important</b>	<b>Not very important</b>	<b>Not important at all</b>	<b>No opinion</b>
Historic streetscapes	66% Very important	29% Somewhat important	3% Not very important	2% Not important at all	- No opinion
Small cafe in the downtown	39% Very important	40% Somewhat important	14% Not very important	7% Not important at all	1% No opinion
Tax rate	65% Very important	26% Somewhat important	7% Not very important	1% Not important at all	2% No opinion
Natural features/ natural beauty	92% Very important	7% Somewhat important	1% Not very important	1% Not important at all	- No opinion
Presence of a quality school	54% Very important	25% Somewhat important	8% Not very important	8% Not important at all	5% No opinion
Presence of wildlife	48% Very important	36% Somewhat important	11% Not very important	6% Not important at all	- No opinion
Proximity to Portsmouth	62% Very important	28% Somewhat important	7% Not very important	2% Not important at all	1% No opinion
Proximity to water/beach	88% Very important	12% Somewhat important	- Not very important	- Not important at all	- No opinion
Recreational opportunities	47% Very important	40% Somewhat important	10% Not very important	2% Not important at all	1% No opinion
Small town feel	82% Very important	11% Somewhat important	2% Not very important	2% Not important at all	2% No opinion

169 respondents

Folks move to New Castle from away and talk about how charming the houses are. They buy, then teardown the old houses for a new modern design. :0)) A community, like a corporation should recognize its strategic competitive advantage about what makes it great. We are a 400 year old town and should commit to who we are. Leverage it. The New Jersey-fication of New Castle is a fast track to losing that identity that makes it so attractive. If you live here you should have to buy in. I don't agree the systematic dismantling of our cultural and architectural heritages. As a 400 year old town, the whole island should be a historical district.

one month ago

[👍 7 Agree](#)

Making the whole island a historic district is not feasible, the majority of the homes on the island are in fact more "modern" than those that are truly historic. Retaining the charm of this area is important, but realizing that home styles change in other areas over the years is important. Climate change, sea level rise, renewable energy, all of these need to be considered when planning for the future. It's confusing how New Castle is being compared to New Jersey in several posts, we are far from that aesthetic.

one month ago

I definitely agree that the whole island should be an historic district. Too much of the town's history has been lost in recent years to multi million dollar investments from folks who do not appreciate that history that is being lost. We moved here from the local area specifically because there was a (relatively!) affordable antique property that we were able to renovate, not gut and modernize. We have maintained as much of the historic features as we possibly could while shoring up the structural integrity of the house.

one month ago

[👍 5 Agree](#)

All of the above is what attracted me to New Castle originally and continually motivates me to make it my lifetime home

one month ago

[👍 5 Agree](#)

The elementary school is the heart of the town and it's the reason my family moved there. Everything and everyone else is just a beautiful and welcomed surprise.

one month ago

[👍 3 Agree](#)

The town has a lot of history and there are some great historic homes. That being said, I 100% disagree that the whole town should be a historic district. Most homes were built post-1930's and many need renovations, etc. This should be facilitated and not inhibited.

To keep the small town charm AirBnB's should absolutely not be allowed (and aren't based on code, but are being run in town).

one month ago

[👍 1 Agree](#)

Historic streetscapes are charming, but it's not realistic to think that future (sustainable) development can always adhere to HDC's narrow view of what is acceptable or appropriate. We should be encouraging and mandating sustainable development and design and prioritizing it over historicist nostalgia. Amenities like a busy retail food outlet or an artist studio in our "downtown" and a high quality school help to maintain vibrancy in our community and to stabilize property values for the entire resident population, not just those who choose to participate in those communities.

one month ago

[👍 1 Agree](#)

The MHT Elementary School, Library and New Castle Common are the top 3 municipal pillars of our town.

one month ago

[👍 1 Agree](#)

New Castle is lovely gem. All is well with the present zoning map, the HDC manages it's responsibilities very well.

one month ago

[👍 1 Agree](#)

Except for too many liberals, way too many, NC is great!

one month ago

[👍 1 Agree](#)

It's important that we continue to be a welcoming community, open to new people and ideas, not a closed community, stuck in the past.

one month ago

[👍 1 Agree](#)

Beauty is in the eye of the beholder. Design evolves. People evolve. To remain stagnant or be resistant to change is not good. A sidewalk throughout town would be a lovely addition. Sidewalks are the circulation system to a town. Let's circulate. Be tolerant.

one month ago

[👍 1 Agree](#)

Above answers are predicated on years of living in New Castle. However, the Town is changing as new residents move in and smaller homes are being torn down to make way for newer and larger homes. The Condo element has allowed some new and old residents to expand housing and decrease acreage and thus more densely populating the Town with construction. The school is a lovely addition to the Town and families. However, it is getting so expensive to educate such a small number of students in New Castle while not providing any resources to the residents who do not have children. Both the Boards of Selectmen and the School should address multiple uses of the school for older and other residents. The school does have quality but it comes at a very high price.

one month ago

[👍 1 Agree](#)

Open Fort Constitution immediately. The COVID excuse for preventing access is no longer valid (nor was it ever). It is an important historic site.

one month ago

[👍 1 Agree](#)

Wonderful place to live. Unfortunately, it makes no fiscal sense to have our own school on the island. For the amount of money required to run the school you could send every child to the most expensive private school in the area and still save millions! Is it great that the school is highly rated, sure, of course it is, the student/faculty ratio will always produce the same result. Studies(thanks to COVID) have shown that exposure to more children (like in a larger Portsmouth School) actually makes the learning environment better. There has to be a serious conversation of when it is time to close the school.

one month ago

[👍 1 Agree](#)

Like the smallness next to Portsmouth and other large towns.

one month ago

[👍 1 Agree](#)

Can't understand why with only 27 students there are 30 people on the payroll

one month ago

[👍 1 Agree](#)

It is important that we maintain what is so precious about New Castle, or our charming village will lose its special character.

one month ago

[👍 1 Agree](#)

As quaint as our little school is, it might be time to assess if it serves the community, especially the children. There are fifteen staff listed in the annual report and twenty-six students. There was only one student slated for sixth grade so the parents wisely sent him/her elsewhere. I'm not sure how great it is socially to have two of three kids in a grade. It may be time to consider tuitioning out all students. The school grounds could be a town center with parking and playground. Town offices could be moved there and so could the woefully small post office.

one month ago

[👍 1 Agree](#)

The school brings a sense of community. It is part of what's important to the town. Without the school we risk losing families.

one month ago

[👍 2 Agree](#)



The balance of historic on the outside, modern/updated/cared for dearly on the inside gives this town a rare authenticity. Never underestimate the importance of our school nor the value of being closer to Market Square than many Portsmouth residents.

one month ago

[👍 1 Agree](#)

I just like this town.

one month ago [👍 1 Agree](#)

Keeping the school will hopefully attract younger families so we don't turn into a retirement village.

one month ago

[👍 1 Agree](#)

Historic district should be expanded to cover entire island. There should not be modern architecture on the waterfront

one month ago

[👍 1 Agree](#)

New Castle has a unique history that should be preserved.

one month ago

[👍 1 Agree](#)

While most people are respectful, small town feel can be over rated when people do not show respect for their neighbors and their property rights.

one month ago

[👍 1 Agree](#)

It is safe, rather quiet, and absolutely beautiful. I love that nature is allowed to thrive and is protected. People understand that coyotes and bobcats are part of the natural ecosystem and needed. People are respectful of each other. Of course, proximity to the ocean probably tops the list.

one month ago

[👍 1 Agree](#)

We have the precious illusion of a rural location while enjoying the conveniences of urban life.

one month ago

[👍 1 Agree](#)

I would like to see New Castle continue to be a vibrant, year round community. Maintaining the local school is an important part of that. And I like the fact that we have recreation opportunities for everyone to enjoy.

one month ago

[👍 1 Agree](#)

All of the above is what attracted me to New Castle originally and continues to motivate me to make it my lifetime home.

one month ago

[👍 1 Agree](#)

A lovely place to call home.

one month ago

Love being close to the water and nature. Plenty of access to water via beaches and boat ramps. Preservation of wetlands is critical. Control of waterfront development by town boards is essential.

one month ago

Mary Kennedy answering

one month ago

The presence of family within a close knit community lends itself to a feeling of security. The quaintness of the town is just as important as the presence of wildlife and a place for kids to play. To overbuild would be a mistake.

one month ago

We have lived throughout the country and are very fortunate to have returned to New Castle after driving though it more than 25 years ago! We are also glad to see that the historical Wentworth has seen such stunning rehab, too!

one month ago

I can't over-emphasize the importance of New Castle's history and significance in this state. We should do more to preserve this.

one month ago

I think the presence of a quality is very important, even though I have no kids currently in the school. I also like being close to a city that has a lot to offer culturally.

one month ago

History would say the we inevitably 'kill the goose that lays the golden egg' ... what draws people to New Castle and what visitors remember is the quaint seacoast village feel/appeal. It is living in a place that embodies what coastal New England is all about with access to a quality of life and amenities that are hard to replicate. That being said, change is constant and is hard to accommodate without compromising the thing that differentiates where we live from everywhere else. Between the inundation of running clubs, bicyclists in bad spandex, moped expeditions, general traffic congestion (making efforts like Safe Path all the more important) along with the ever increasing presence of basketball backboards, trampolines, solar panels, cars in yards and vain attempts at historical architecture, I am starting to see the slow slide towards being like any other suburb ... Greenland with a beach.

one month ago

I worry that we are losing our small town feel as more and more homes are torn down and rebuilt. It is a tragedy that the (Thayer) home on Wild Rose Lane was allowed to be completely wiped out. Our school continues to be a gem - however it is very difficult for families to be able to afford to move to New Castle.

one month ago

The Thayer home was thoroughly examined, and not historic. The house that was there was not the original home, but in fact itself had undergone several renovations and additions over the years. There is a detailed report on the matter.

one month ago

The town should consider expanding the historic district to include the entire town.

one month ago

I promote wild life but the deer situation is out of control on the island.

one month ago

I (and my family) embrace our wildlife, and support our environment, and the people who keep it safe and beautiful. I never want to lose our historic sites, and our small quaint post office. But we must put our police and fire fighters a top importance, It is great that we live in a town where you comfortably wave hello or stop them to inquire about a concern... this is priceless.

one month ago

All of the above are important

one month ago

Recreational opportunities on land are limited, as are safe walking trails and paths

one month ago

Why do otherwise intelligent people in New Castle lean a certain way?

one month ago

I like the wildlife but not the coyotes.

one month ago

We have a sense of community that I hope we can keep despite all the houses being sold for 2nd homes.

one month ago

Having a school and a library in town is very important to me. Also preserving the character of this historic town is very important.

one month ago

The people make the community!  
I do feel the Historic District should be through the whole main part of the town.

one month ago

wildlife and ocean access are very important

one month ago

wildlife and ocean access are top of my list

one month ago

Limit tree cutting! Nothing compares to mature trees with established root systems. In addition to their beauty, trees help our fragile ecosystem. Even Eastern White Pines that many consider "junk" add so much. We're you aware that one Eastern White Pine with .45" diameter can handle 2600 gallons of storm water runoff a year? All properties including those not in the protected shoreline should maintain some mature trees. We also need to enforce maintaining storm water runoff on one's own property so as not to cause problems with neighboring properties.

one month ago

n/a

one month ago

Given the insurmountable infrastructure limitations, I would avoid improving tourist attractions (including cafes downtown) that might attract more visitors and prevent residents from even getting their mail. Remain strict in enforcing speed limits and step up motorcycle noise limits.

one month ago

Preserving many of the above features and benefits of living in New Castle will be an important objective as we plan for the future.

one month ago

I wish Henry's were open both days on the weekend

one month ago

New castle has a physical location and environment that makes out town unique. I feel strongly that we must be vigilant about saving the integrity of the shore, waterlands, and wild life. Once they're gone, there's no getting them back.

one month ago

Not overly concerned about wildlife. Like what I see in my back yard, except when the deer eat our flowers.

one month ago

My folks moved here when I was 6 never left for long and lucky enough to purchase property with my wife and raise our family here. What a place to grow up. Ocean, river, islands to explore. Our boundaries were the bridges! In the boats it was basically the shoals. Can't wait to smell the salt air coming onto the island a calm I can't describe comes over me I'm home. I only wish new residents to New Castle could just appreciate what we have and preserve it not change it to where they came from

one month ago

It's small enough to be walkable in one day.

one month ago

N/A

one month ago

Having a cafe in the town center is certainly a plus as it adds to the sense of community

one month ago

New Castle has changed greatly over the years, the small town feelings are mostly gone, the school is dipping into a low that was only surpassed in the 1980's. There's not enough interaction in the school, many students reject the less financial kids. The school is getting a reputation for allowing bullies to run playground activities. I've supported the school for many years but can no longer support it. It's all about money and who has more. This will be my forever home, but my family will probably need to sell and move to a more affordable location, possibly 50 miles away. The newbies love the idea of living here but tear down or totally remodel a 200 to 300 year old house then many, within 5 years, choose to attach a million dollar + fee and move on never giving the island another thought. I'm bitter with the changes that have happened here.

one month ago

Reliable and responsive emergency care. My adult son, who lives with us, called 911 and got a BUSY signal. Another time we called the New Castle Fire Department due to a strong sulfur/gaseous odor in the house and there was no answer so we called 911 which went to Kittery and then Kittery 911 contacted New Castle Fire. This is unacceptable.

one month ago

I do not have school age children, but I value the diversity and energy that young families bring to the town

one month ago

We've lost a lot of trees along 1B this past year. I'd like to see a serious effort to replace (many) of them.

one month ago

An active and welcoming church which sponsors many local events

one month ago

I love the common, and having it be a space for residents and non-residents alike

one month ago

New Castle will not have young people move in due to the high cost of housing (very high) have to wonder about the future of that school

one month ago

As I noted in my response to number one, natural beauty and the presence of wildlife are the most important. We should do all we can to preserve natural ecosystems, otherwise we are a sterile suburb of Portsmouth. We should preserve as much natural diversity as possible, from the animals to the plants.

one month ago

I love the walking paths to meet and greet neighbors and new people from the hotel

one month ago

DON'T CHANGE IT.

one month ago

Love how easy it is to do what I want with my property. The lengthy precedent of neighbors engaging in lawsuits between each other, and the Town, paves the way for future development.

one month ago

All these things are important. All contribute to making New Castle the special place it is.

one month ago

It is town where our family has resided for many years.

one month ago

MHT School is a gemstone of our community. As long as costs can be kept under control, and this continues to be accomplished, we should continue to keep the elementary school open, less grade 6. Unlike every other municipality in the state we have no opportunity to grow our tax basis as the island is fully developed. Tear-downs/rebuilds, while they increase our valuation, are not enough to cover many of the services desired by new residents who come from heavily populated areas.

one month ago

A little more commercial development would be welcome, for example a functioning cafe/general store.

one month ago

Minimizing disruption to properties views and traffic flows (small shared lanes, etc.) would be nice. When properties being impacted (views lost, new traffic patterns) by new construction, taxes should be adjusted accordingly. Condensing of land should be prevented to preserve open spaces and protecting wetlands and waterfronts. Overbuilding the island should be prevented.

one month ago

The rural charm of New Castle needs to be maintained while making it more navigable by foot and bicycle. Town buildings should be maintained to give the town a sense of prosperity and permanence.

We should consider potential traffic congestion that would ensue as a result of any effort to improve the Commons, Ft Stark and Ft Constitution. Adding amenities and parking capacity will only increase use and impact quiet rural charm of the town.

There needs to be a wildlife management program to address over population of deer and turkey. At times the sheer number create unsanitary conditions.

one month ago

We need to preserve the town for its history and value to NH.

one month ago

15 school staff members for 26 kids? are you kidding me?? I love the kids and love having them and they bring vitality to the town. but the time is now to re think how to best serve the entire population not just a few families with kids. turning the school into a new town hall / meeting location is a no brainer.

one month ago

Safe and quiet.

one month ago

Safe

one month ago

.

one month ago

New Castle is a unique treasure blessed with natural beauty. Also, great proximity to the amenities Portsmouth has to offer.

one month ago

It is truly the aggregate of all of the above that makes New Castle such an amazing place to live!

one month ago

The town's diverse demographic is a health mix and good for the town's long term viability.

one month ago

Ocean and river

one month ago

Continue to keep strict planning and zoning restrictions especially in the historic district parts of New Castle

one month ago

All of the above!

one month ago

The quiet village of New Castle but so convenient to Portsmouth and other daily needs

one month ago

Our school is only as good as their teachers albeit not to have a school would be detrimental. The tax rate being one of the lowest in the state is only part of an equation to assessments, which have skyrocketed. This assessment explosion prohibits many people from buying into town or being able to stay in their home. The select board should review the qualifications for relief (elderly exemption).

one month ago

If we are losing long time residents due to increased taxes, then perhaps we should review our relief rules. But you can't do anything about the increase in property values, and there's no way we can accommodate everyone that would like to buy into town without high rise apartments- and I don't think any of us wants that.

one month ago

See #1

one month ago

These are the reasons we chose New Castle.

one month ago

All the reasons above drew us to New Castle! We love it here!

one month ago

Our children are older . . .

one month ago

A dental gathering place, post office, cafe or more will help in keeping a community together

one month ago

Love this town

one month ago

It cannot be improved on

one month ago

We love living here.

one month ago

Keep it like it is

one month ago

Such a jewel! Can't imagine living anywhere else.

one month ago

a pleasant well located small town

one month ago

All of the above, except that our kids are grown so school is not important to us.

one month ago

This was addressed earlier.

one month ago

Stated in first box

one month ago

Stated above.

one month ago

The historic core area of the downtown

one month ago

All of the above- could not have found a better community to raise our kids

one month ago

overall a great place to live.

one month ago

N/A

one month ago

The activity on the Piscataqua River (boating and shipping) is an asset. Other attractive features are the ocean and the proximity of the the Isles of Shoals.

one month ago

The only wildlife we have are deer, turkeys, and small mammals and rodents. Each of these has a downside as well. Were we to have a balanced ecosystem, with predators, wildlife would be more welcome.

one month ago

small town look and feel, friendliness of residents

one month ago

New Castle desperately needs the cafe to re-open asap with the opportunity to expand into a market.

one month ago

A market would be nice, but let's be real -it will never compete with a grocery store. Financially, I am not sure it could make a go of it.

one month ago

You nailed it with this list!

one month ago

---

### 3. When you think of New Castle in 5, 10, or 20 years, what would you like to see?

Maintain current historical, small town feel with respect for natural and historic integrity. Longer term, I think we absolutely need a safe walking/riding path for the entire perimeter of the island. I agree that the downtown cafe is sorely missed!

one month ago

[15 Agree](#)

Expansion of the Historic District to ensure preservation of historic homes. Preservation of Town Hall. Attention to possible ravages of climate change, including the raising of the causeway from Portsmouth to New Castle.

one month ago

[11 Agree](#)

If it's going to be raised it needs to be widened, goes without saying really

one month ago

I would like to see a bike lane and side walks. Maintain the character of the town.

one month ago

[9 Agree](#)

maintain same character - individual private homes, scenic, walkable, safe; provide safe walking / bike trails; maybe construct a town marina/dock with slips for resident's use.

one month ago

[3 Agree](#)

I want to see a vibrant community, where families can move into town and we continue to grow, as opposed to becoming even more of a retirement community.

one month ago

[3 Agree](#)

It would be nice to see a little diversity on the select board in the future. Maybe a woman... maybe not just an echo chamber of like minded people... maybe some representation for the rights and respect of property owners. One has to be very very brave to run for office in New Castle at the risk of being publicly destroyed. Anyone that dare show up with an idea that doesn't fall in line with the group think of the elected or volunteer committees is promptly ostracized. The reason you see "the same old same old" all the time is because the people in power are so inhospitable. What I would like to see in the future is a kinder, fairer more inclusive New Castle.

one month ago

[1 Agree](#)

More Republican

one month ago [1 Agree](#)

Solar panels allowed and encouraged . Water protection along River Road with stone walls to prevent water from flowing onto lawns and the road.

one month ago

[1 Agree](#)

Preserve as much of the historic stock that we can while allowing a reasonable amount of modifications and modernizations. More commercial activity in the center of town (town hall building could be repurposed for example). A strong school and better utilized recreational building. More housing stock through potential multi-family buildings and accessory dwelling units.

one month ago

[1 Agree](#)

A bike lane or sidewalk in a town such as this is beyond comprehension! Currently the safe path only allows people from the Wentworth area to walk to the commons. Children are not allowed to ride bikes on the "safe path", they must still ride in the street. Joggers don't use the safe path as they assume they can jog 2 to 3 side by side in the street. The town will look entirely different in a few years and not in a positive manner

one month ago

[1 Agree](#)

Maintain character of village.

one month ago

[1 Agree](#)



Pretty much exactly what we see today!

one month ago

[👍 1 Agree](#)

A more mixed community. Becoming a haven for wealthy young families and retirees. Zoning should be reviewed to address some of the newer and "Larger" structures being built. Space is being crowded and the Town is again faced with "Condo" conversions. Does the Town need more Condo conversions and loss of open space. The Town also should address "accessory apartments" which are good for extended families and income to allow residents to stay in their homes.

Also there should be more involvement between Town Boards and Agencies and the public. Fostering involvement and knowledge is a key to a good and healthy community and provides more interest in public service to the Town.

one month ago

[👍 1 Agree](#)

No new growth and an expansion of the historical district to ensure the preservation of the many locations on the island. A shoreline pathway linking Fort Stark to the Common to the Fort Constitution would be a welcome link among the sites.

one month ago

[👍 1 Agree](#)

no more tear downs if at all possible, and historically sensitive renovations to the current infrastructure. Sidewalks completed to the causeway, and a realistic plan to elevate the causeway against rising sea levels.

one month ago

[👍 1 Agree](#)

Preserve the charm of our community while improving pedestrian access for walking. Plan ahead for the rising water and the potential impact to the causeways. Expand the hours of the Post Office for those that work so they can get their mail after or before work. Expand the recreational center to also include Pickle Ball as an option and not just tennis. Is it feasible to consider an inside gym/work-out room too? Speed bumps as traffic particularly in the summer is way too fast especially around curves where we walk.

one month ago

[👍 1 Agree](#)

Greater ability to walk/cycle on the roads, and stronger efforts to keep people driving slowly through the community...particularly other residents. Safe Path extension the entire length of the island (where possible) would be a great improvement. Fort Stark and Fort Constitution renovations and access, possibly a park would be very nice.

one month ago

[👍 1 Agree](#)

The speed limit on certain roads of 15 mph needs to be consistently posted for the safety and peace-of-mind for all residents and visitors.

one month ago

Exactly what I see now

one month ago [👍 1 Agree](#)

Not much change. I am very saddened by tear downs and replacing charming and historic buildings with Buildings that are out of scale or contrary to the vernacular of old New Castle.

one month ago

[👍 1 Agree](#)

The same historic houses, more walking trails, the historic museum still open to the public, a cafe/store in downtown.

one month ago

[👍 1 Agree](#)

To preserve the character of the town, I would like to see the historic district expanded and have us become a tree city. It's important we not allow clear cutting and start protecting mature trees. Mature trees help with storm water and play host to thousands of insects, birds and animals. Additionally, people should not be permitted to bring in fill to elevate a new house. It changes the landscape and negatively impacts neighbors.

one month ago

[👍 1 Agree](#)

Exactly what I see and experience today, with the extension of the Safe Path from the Common to the Portsmouth Causeway.

one month ago

[👍 1 Agree](#)

To preserve the character of the town I would like to expand the historic district and renovate town hall. It's crucial to limit clear cutting of trees and bringing in fill whether or not your property is near the water. We need to make more of an effort to preserve mature trees not just because they are beautiful but because mass tree removal affects neighboring properties. I would like to prevent docks in Lavenger Creek and personal watercraft in the back channel.

one month ago

[👍 1 Agree](#)

As little further development as possible. Protection from sea level rise along coastline. Safe sidewalks or paths along road. Maintenance of historic homes, and prohibition on demolishing historic homes unless replaced with similar construction.

one month ago

[👍 1 Agree](#)

Change can be hard especially for us new Englanders. Mostly preserving what little open space left. The rage to tear down and build bigger is quite a conundrum and surely will be for our future. Nothing stays the same so our leaders must determine what is beneficial and what isn't within their control.

one month ago

[👍 1 Agree](#)

Historic and natural preservation, but with smart updated infrastructure - roads, water supply, buried power lines, better cellular reception,

one month ago

[👍 1 Agree](#)

A sidewalk the entire length of route 1B

one month ago

[👍 1 Agree](#)

I'm not sure that is realistic... are you suggesting that the property owners along 1B give up their scant small front yards ? Some of the historical homes in town are so close to the street you would have to tear them down to make room for a side walk .

one month ago

Identical appearance with a sidewalk from the Wentworth to downtown portsmouth  
Limitations on use of the Commons

one month ago

[👍 1 Agree](#)

Expansion of historic district, cafe on main street, sidewalk through town

one month ago

[👍 1 Agree](#)

Safe running/walking path behind a barrier on the causeway & bridges.

one month ago

[👍 1 Agree](#)

Begs the question... why wasn't the causeway built wide enough to accommodate pedestrians in the first place ? Are their environmental laws restricting its width ? Would you put up a Jersey barrier along one side for pedestrians and have the bikes ride with the automobiles ? More often than not most pedestrians don't even use the sidewalks provided on the bridges and follow no set rules such as walking against traffic and bicycling with it, basic free for all. I'm not a civil engineer but if you put up barriers on either side of the road you going to end up with single lane traffic. Just not enough asphalt real estate out there ...

one month ago

Safe running/walking path behind a barrier on the causeway.

one month ago

[👍 1 Agree](#)

Well preserved historical district, and recreational facilities for property owners to include safe walking pathways.

one month ago

[👍 1 Agree](#)

More investment into the ice skating rink, library, and commons.

one month ago

[👍 1 Agree](#)

Improved town hall more side walks

one month ago

[👍 1 Agree](#)

I would like to keep it like it is today.

one month ago

[👍 1 Agree](#)

An active and thriving school community.

More young families raising kids.

A safe path for walking, biking to allow residents to enjoy outdoor activities and connect the neighborhoods.

one month ago

That new castle remains peaceful, serene with preservation of waterfront. Limited private dock development that is only garnered by local control.

one month ago

I would like to see as much of the green space kept as is, the islands kept as is, and the marshes kept as is. We are taking away the last of the building areas and wiping out animal habitats.

one month ago

More sidewalks and bike lanes where possible, making these forms of transportation easier.

Fort Stark needs to be renovated and become a pay to access park with more security.

one month ago

Hopefully still see signs of the history that so much a part of New Castle.

one month ago

prohibit the use of gas powered leaf blowers by landscape companies. Electric blowers are much quitter and are readily available.

one month ago

Pedestrian and bike-friendly roads, sustainable and resilient approaches to design and development that acknowledge our acute vulnerability given proximity to the coast. A thriving school, and a vibrant "downtown" with a cafe etc. A more diverse resident population: I worry that the demand for property in New Castle is drawing super-wealthy buyers who want the tax benefits of living here but aren't interested in contributing to our community meaningfully (or even living here more than a month or two at a time). it would be wonderful to see new residents from more diverse backgrounds--socio-economic, racial, political etc--enriching our community. I value the historic character of the island, but I think we need a wider, more informed view of how to allow future development while preserving what we love about New Castle.

one month ago

Not much change, frankly. Its charm and allure is rooted in its simple beauty and in its history. Taking measures to secure what has endured for 400 years is a priority to me.

one month ago

I would like see us retain our small town charm, a strong MHT Elementary School, a vibrant library our volunteer spirit and the continuation of the Great Island Road race.

one month ago

I would like to see that we have conserved the natural beauty. We have Maintained the historic charm, which we seem to be losing.

one month ago

Not much change - adapt carefully to changing needs

one month ago

I would like to see that the town has found a way to create "affordable" housing for two dozen or more families, many of whom have elementary school age children attending MHT.

one month ago

More walking paths and sidewalks. More children and young families. Lively cafe. Respect for the simple, pure style of New Cstle architecture.

one month ago

Maintain New Castle Commons - keep its natural beauty.

Perhaps

one month ago

I would like to see something I could still recognize.

one month ago

Preserve small town feel and historic elements throughout entire island , not get overly built up. Coastline preserved, minimal variances granted. Establish sidewalks/walking path from Wentworth Hotel to center of town.

Continue upkeep of New Castle Commons park area - walking path along boundaries, upgraded fencing, maintain & upgrade playground.

Keep the school ! It is a vital part of the community. Though I strongly question why the principal is not a teaching principal - especially given the salary he receives.

Consider noise ordinance for landscapers - eliminate use of gas powered leaf blowers & mowers.

one month ago

I hope it retains its small town feeling, sense of community and historic value/charm. As new homeowners come in, it's fine if they make improvements as long as they are in keeping with the historic nature of the town.

one month ago

I would like it to be close to what it is now. Perhaps a larger school, a cafe that is open, and the new pathways making it safer for people to walk all the way through town.

one month ago

A little market, bike lanes, and maintain same character.

one month ago

Stricter guidelines on bringing in fill and changing the landscape causing flooding and water problems for neighbors.

Consider living material in the definition of walls and fences. Conifers make much larger walls and fences than the 6' limit.

one month ago

The character maintained. Renovate the town hall per the plan developed by the committee headed by Rodney Rowland which would enable us to have a meeting room which could accommodate more people, enable them to see what is being presented and feel more welcoming.

one month ago

Historic houses should be preserved.

one month ago

minimal growth and more diverse population

one month ago

I wonder how many buildable lots are left on the island of ... It feels like the only diversity left out here is if you are selling to a millionaire or a multi-millionaire.

one month ago

Avoid New Jersey-style shorefront development

Keep and enforce existing Dock limitations. Keep this part of the Master Plan

one month ago

Docks are regulated by the State of New Hampshire as the town attorney stated in a Zoom meeting recently. The NHDES, the Army Corp of Engineers and the Natural Heritage Foundation work in concert to approve dock permits. They are heavily regulated. When residents have waterfront property they need to follow state and federal regulations to obtain a dock permit. The town of New Castle has regulatory rights to the high tide mark. Residents with waterfront have riparian rights which include a six foot wide path to the water. Access stairs to the water are not subject to building codes, this allows stairways to be built in a fashion that allows wildlife to pass by with ease. And so much more ....

one month ago

"Not New Jersey." especially out of control private docks.

one month ago

Please see my comment above and take the time to look at the process a waterfront owner has to go through to get a permit.

one month ago

A historic village of old houses without modern changes

one month ago

A clean, tidy, climate-aware community with a small town feel and historic aspect

one month ago

Pretty much what we have now, but updated to stay current with the needs of the community. I hope that we never have traffic lights in the town, always have a 25 MPH speed limit, always have the same form of government, always have the town controlled by those families who have lived here the longest. The future of the school will continue to be an issue, especially if enrollment continues to decline.

one month ago

The school is central to the vitality of New Castle and should always be a priority for so many reasons. The attendance will always ebb and flow but keeping the school vibrant should always be the focus. Years ago the attendance fell to just 18 kids but by the time our kids attended the school it had blossomed to 70. We need to always keep the long view when considering our support for MHT elementary school.

one month ago

[1 Agree](#)

I agree ... is there such a thing as a single sign that could stand at the entrance point at either end of the island that states the the speed limit is 25 -MPH or less where posted. The island is trashed with traffic signs.... the next time you fellow islanders drive back home take note, count them ! There is an absurd amount of signage, up to and including that hideous No U Turns sign on our quaint little Post Office.

one month ago

Preservation of historical site is important, but it should be balanced with smart investments in upgrading infrastructure and resilience that positions the town to remain safe and accessible. This includes making our community safer for pedestrians and non-motor vehicle traffic, protecting sensitive undeveloped open space and water quality. Investing in smart strategies that are forward thinking will benefit everyone, this includes alternative energy sources.

one month ago

Put the wires underground, ban gas powered cars, put in windmills in the ocean (they're so pretty!) if they would help the ecology in the long-term, keep the small town feel, extend the sidewalk

one month ago

Maintain the physical setting -- the trees, the Common, the beach access, as well as the historic areas. In fact, I'd like to see the historic district expanded, and ENFORCED!

one month ago

A sense that we have preserved the history of the island and a colonial like feel from what is primarily seen driving and walking through the island.

one month ago

I'd like to see the residents new and old preserve and nourish what we have here not try to change it to mimic where they came from. New Castle is a "one of" and should remain that way

one month ago

The safe path makes the entire island walkable; the same town center; no more mcmanions;

one month ago

basically unchanged from what it is today.

one month ago

We hope that not much will change other than completion of the Safepath.

one month ago

That not much will have changed, however, would like to see completion of Safepath.

one month ago

Maintain the 400 year old heart and soul.

one month ago

More sidewalks to ensure safe walking; specifically from the school to the Common. I think it's vital that we preserve all the open space we have. An outdoor tennis court near the recreation building.

one month ago

Small quaint town

one month ago

I hope it doesn't change!

one month ago

More trees. Not a lot less empty spaces. The telephone poles gone and lines buried. Houses for those not multimillionaires, for a few.

one month ago

Not much change to its charm and friendliness

one month ago

Sidewalks/ paths that are safe throughout town.

one month ago

Safety improved on 1B. So many walkers, runners, bikers and cars...it should be a major priority for the Town.

one month ago

More community activities that include all. More traditions, bring old traditions back.

one month ago

I'd like to see an island that has maintained its wild feel - not a suburban, sterile environment of curated lawns and unnatural landscapes with fences up everywhere. I'd like to see the ledge, trees, healthy wetlands, and diverse wildlife beyond squirrels.

one month ago

A true community, full of walk/bike pathways, gardens, musical more progressive alive church that is involved in larger causes. (Habitat for Humanity etc.

one month ago

Definitely complete the sidewalk from the Common to the causeway--for safety alone.

one month ago

NO BIKE LANES

one month ago

I would like to see limited access for non-residents. This is an Island with limited businesses. There is no need for people to drive through just to 'enjoy' OUR small town. Erecting gates on both ends of the Island would solve this problem. Perhaps, as sea level rise becomes our reality, we can use a ferry, which would allow for regulating those allowed on the Island.

one month ago

Sea level rise.

one month ago

I would like to see the historic district enlarged and respected, because this is what makes NC, visually, so special and gives it its character. I think it is important to allow people to update houses in the historic district, but I do not think major changes should be allowed, such as increasing a house from one storey to two.

one month ago

keep the town looking as historic as possible, preserve open spaces, limit future growth.

one month ago

Little change; would love it if zoning laws and priorities discouraged big, fancy houses and development of open spaces

one month ago

Basically what is already here.

one month ago

I would like to see the same sort of charm, but it would be nice if more homes could become green and reduce the overall carbon footprint of the town.

one month ago

a greater commitment to preserve natural beauty of the island - less construction

one month ago

Preservation of architecture and natural habitats

one month ago

Very little change- maybe sidewalks.

one month ago

Things pretty much the way they are now. The Town Hall needs to be upgraded and better maintained. Other town buildings, i.e. rec center/library, public safety, public works, various out-buildings, etc. must continue to be maintained. The old fire station completely rebuilt to make it look original and have it become a part of our Historic Museum. Perhaps an additional pavillion at the common could be a good addition. If any sidewalks or walkways are to be constructed let the State of New Hampshire do the work and bear the cost, rather than to put that burden on the townspeople, either by private donations and/or by increasing our taxes.

one month ago

A limit on future development. This has already diminished severely the amount of woodland and open space on the island. We need to preserve what is left. Furthermore, increased development will put additional strain on the town's water and sewer systems.

The town needs to give much more serious attention to the impact of climate change. The effects are already visible around our coastline and are going to have an increasing effect in the years ahead. To limit vehicular traffic it would be good to institute some form of public transport for people to access supermarkets, medical facilities and central Portsmouth. This would be of value to young and old alike.

one month ago

Historic homes/buildings, water, green spaces, woods and safe path

one month ago

I'd like it to be a community as it is today. I'd like the architecture to reflect the history, not stray and be crazy modern. I'd like to see a thriving school, concerts at the gazebo. This is all good!

one month ago

Safe walking paths

one month ago

More money spent on the upkeep of public buildings.

one month ago

Its population and building density is stable. Town buildings, utilities & services are updated to serve the residents. Pedestrian walkways and cycling lanes enhance the accessibility of residents and visitors here to experience this scenic and charming town.

one month ago

I would like the whole island become an historic district so the small houses could not be torn down

one month ago

A lot of what we have now. Increased historic district range. No increased building - don't subdivide properties. Preferable not to have short term rentals/AirBnB. If not possible, limit short term stays to summer months. Don't mind the hotel or the inn, but I want neighbors, not random weekenders living next to me.

one month ago

Architecture curated to refine the New England small town atmosphere.

one month ago

I would it to remain the same. We should expand the historical district and maintain the historical house with strict building regulations.

one month ago

No change

one month ago

A safe walking path through the town that is handicapped accessible. Mail delivery to directly to homes and not to PO Boxes.

one month ago



No big changes in our historic streetscapes or the core of the village

one month ago

protected green space , protected waterways and shore. sidewalks.

one month ago

A balance between not preserving the town in amber and development that detracts from what draws families to New Castle in the first place, walking/biking paths from bridge to bridge encouraging health and community, proactive planning for climate change.

one month ago

Expansion of Historical District

one month ago

What I see today. Don't fix what isn't broken. Invest in maintenance and preservation. I'm in favor of tactfully adding walking/biking lanes but not the out-of-touch-with-reality method selected by Portsmouth.

one month ago

Would it be possible to add a fenced dog run area to the Commons? On the south side, east of the boat parking lot? There is a dog run near the Coast Guard Station, but it is small and un-fenced, a danger for both drivers in and out of the Coast Guard Station and the road on the west side.  
Also segregating pedestrians and cars/bikes all along 1B, including the causeways.

one month ago

I like the idea of a protected dog run, but we would need to consider how to police the dog 'relief' problem

one month ago

As much preservation as possible with some additional amenities like a island long walking trail.

one month ago

Young and old, rich and not so still being able to enjoy the island.

one month ago

Better sidewalk walking paths, monitor causeway for need to raise as water levels increase.  
Improvements to Fort Stark, get rid of graffiti.

one month ago

No change

one month ago

Better space for pedestrians and cyclists along the main road.

one month ago

Improvements at the school

Maintain the charm and character of the town

one month ago

No change except for modernization required by technological change; e.g. desalinization plant for water, local power generation if possible

Fixed Wentworth bridge

Restoration of a local representative from New Castle

Resolution of the the school funding problem where each community takes care of its own

one month ago

Keep it stable.

one month ago

Keep small town feel, not get overly built up, coastline preserved, minimal variances granted.

one month ago

Exactly what we have without further large expensive homes and a completed safe path for safe walking in town

one month ago

side-walks throughout (that are shoveled in winter), cafe that's open for dinner

one month ago

Low taxes and real people actually living here. Would rather not see scores of fudge and saltwater taffee shops lining main street, though a local tavern to accompany or be part of a local "Henry's" would be lovely.

one month ago

a Public House ... what a lovely idea

one month ago

[👍 1 Agree](#)

Remain quaint with historic sites preserved; safe walking areas for all. Downtown cafe for gathering and fellowship

one month ago

Maintain small town feel

one month ago

Would like to maintain its character

one month ago

Hopefully unchanged.

one month ago

As is today

one month ago

Contributed preservation of natural spaces, side walks and cross walks where feasible

one month ago

Minimize the effects of climate change.

one month ago

Exactly the way it is now - with a continued commitment to historic preservation and building a diverse and caring community of people.

one month ago

what I see today

one month ago

nothing different

one month ago

A more efficient town administration. Establishment of a town administrator, even part-time, would go a long way toward this goal

one month ago

Buffalo Wild Wings and TJ Max

one month ago

Agreed with comments below.

one month ago

Safe walkway & bikeway around the island and preparedness for sea-level rise- River Road, Causeway at least. And, pickleball courts at the Common and Rec Center, more younger families. Generally though, no change.

one month ago

residents interested in keeping the historic character of the town

one month ago

Little change. Better walkways or safety.

one month ago

A wider Rte 1B and crosswalks at the post office and town hall.

one month ago

who's houses are you going to tear down .. there goes the historical district

one month ago

---

4. How satisfied are you with the following aspects of New Castle?  
*Please elaborate in the comment section.*

	<b>Very satisfied</b>	<b>Satisfied</b>	<b>Neutral</b>	<b>Dissatisfied</b>	<b>Very dissatisfied</b>	<b>No Opinion</b>
Availability of senior services and programs	6% Very satisfied	26% Satisfied	35% Neutral	7% Dissatisfied	4% Very dissatisfied	22% No Opinion
Building and development in town	3% Very satisfied	31% Satisfied	24% Neutral	30% Dissatisfied	11% Very dissatisfied	2% No Opinion
Conservation efforts	9% Very satisfied	42% Satisfied	23% Neutral	17% Dissatisfied	7% Very dissatisfied	3% No Opinion
Facilities at the Great Island Common	28% Very satisfied	46% Satisfied	14% Neutral	10% Dissatisfied	2% Very dissatisfied	- No Opinion
Fort Stark (state-owned property)	15% Very satisfied	33% Satisfied	18% Neutral	24% Dissatisfied	5% Very dissatisfied	5% No Opinion
Fort Constitution (federally-owned property)	10% Very satisfied	32% Satisfied	31% Neutral	16% Dissatisfied	7% Very dissatisfied	5% No Opinion
Infrastructure upgrades	8% Very satisfied	40% Satisfied	30% Neutral	17% Dissatisfied	3% Very dissatisfied	3% No Opinion
Maintenance of town-owned roads	17% Very satisfied	58% Satisfied	13% Neutral	9% Dissatisfied	1% Very dissatisfied	1% No Opinion
Parking for residents	15% Very satisfied	56% Satisfied	17% Neutral	7% Dissatisfied	2% Very dissatisfied	3% No Opinion
Pedestrian safety and access	2% Very satisfied	17% Satisfied	16% Neutral	49% Dissatisfied	14% Very dissatisfied	1% No Opinion
Preservation of the historic district	15% Very satisfied	46% Satisfied	15% Neutral	18% Dissatisfied	5% Very dissatisfied	1% No Opinion
Recreational opportunities	20% Very satisfied	49% Satisfied	16% Neutral	9% Dissatisfied	2% Very dissatisfied	3% No Opinion
Storm preparedness	14% Very satisfied	47% Satisfied	18% Neutral	11% Dissatisfied	3% Very dissatisfied	7% No Opinion
Town beach	37% Very satisfied	44% Satisfied	11% Neutral	3% Dissatisfied	3% Very dissatisfied	1% No Opinion

	Very satisfied	Satisfied	Neutral	Dissatisfied	Very dissatisfied	No Opinion
Traffic speed	17% Very satisfied	36% Satisfied	12% Neutral	27% Dissatisfied	8% Very dissatisfied	- No Opinion
Use of the Great Island Common park area	24% Very satisfied	50% Satisfied	18% Neutral	3% Dissatisfied	3% Very dissatisfied	3% No Opinion
Use of the recreation building	11% Very satisfied	40% Satisfied	27% Neutral	11% Dissatisfied	5% Very dissatisfied	5% No Opinion
154 respondents						

I share the concern regarding homes being purchased and torn down in favor larger scale home that do not reflect consideration nor respect for our historic community.

one month ago

[10 Agree](#)

The recreation building is woefully underutilized for young residents, kids, and families. And, for the life of me, all the reasons stated as to why younger residents are restricted in their ability to use that building are miserly, at best.

one month ago

[9 Agree](#)

I also am distressed about the teardown mentality. We do need to respect property rights, but can we make it a little more difficult to replace beautiful old structures in a town that values its history? A teardown tax perhaps?

one month ago

[7 Agree](#)

The wealthy purchasers don't care about a tax

one month ago

[5 Agree](#)

I'm pretty sure I know what property this comment is targeting, and homes built in the 1930's aren't "historic"....

one month ago

Fort Stark is wonderful to have access to, however the graffiti and poor condition of the old structure is sad and possibly unsafe. How could that be better maintained/secured and leveraged as an attraction for the town?

one month ago

[2 Agree](#)

Owners of houses in the historic district should be able to tear them down as long as they rebuild with a like style home. That way the area can keep the historical feel and the owners can enjoy a well insulated house with level floors and modern conveniences

one month ago

[2 Agree](#)

not enough being done to protect the historical houses. not enough being done to protect the environment. traffic law enforcement is a joke in this town and everyone knows it. dogs off leash in the commons , beach , and safe path are becoming a big issue and the ordinance is not enforced. why? not enough communication or adequate signage reminding people to pick up after their dogs.

one month ago

[2 Agree](#)

I think for a small town we do VERY well with all of items listed above.

one month ago

[1 Agree](#)

More concern about being good steward of our buildings and property and less emphasis on having the lowest tax rate in the state. The Rec Center was poorly constructed and needs updating - acoustics are very poor, needs new windows and doors, insect issues.

one month ago

[👍 1 Agree](#)

disagree

one month ago

It would be important to allow solar panels on houses. The riverside of Cape road needs stone walls to keep water from flowing on the road into yards during high tides.

one month ago

[👍 1 Agree](#)

The Police Department does very little actual enforcement. Just a strain on our taxes. \$100k salary plus a house and benefits for the Chief? Give us a break!

one month ago

[👍 1 Agree](#)

dogs off leash at the common is a concern, as well as the fact that some dog owners either don't pick up after their dog(s), or actually have the audacity to put it in a bag and leave it by the side of the road

one month ago

[👍 1 Agree](#)

20mph is too slow when that is up. 25mph is fine year-round.

one month ago

[👍 1 Agree](#)

As to sidewalks, etc, If any sidewalks or walkways are to be constructed let the State of New Hampshire do the work and bear the cost, rather than to put that burden on the townspeople, either by private donations and/or by increasing our taxes. There is a the-year plan in place by the state which addresses this need.

one month ago

[👍 1 Agree](#)

More can always be done. Restoration of the Walbach tower would be a great project. We are a very historic place. We should preserve and educate and treasure what we have here.

one month ago

[👍 1 Agree](#)

We need to add more value to the Commons and Recreation center with pickle ball courts, which are in creat demand.

one month ago

[👍 1 Agree](#)

Signage and facilities at the Common need some upgrades. Bathroom facilities in some form need to be available year round. Signage is inadequate. Numerous little signs are posted arbitrarily but really what is needed is one larger sign explaining the rules. It should be posted at the gate, at the dog gate, at the entrance on Ocean Rd, at the back gate and again as you enter the beach from the Common. It should include leash law, fines and no feeding birds. Two problems that don't seem to be addressed in town are speeding and off leash dogs. Why have the laws if they aren't enforced.

one month ago

[👍 1 Agree](#)

Lots of comments about need for sidewalks and bike paths but you can't make the roads wider in many places. What can be done is to enforce the current vehicle speed limits and possibly reduce the limit in tight spots.

one month ago

[👍 1 Agree](#)

The bathroom facilities at The Commons needs upgrades

one month ago

[👍 1 Agree](#)

Enforcement of noise and speeding could use some improvement. Harley-Davidson owners seem to get a free pass

one month ago

[👍 1 Agree](#)

The Conservation Commission is out of control. Their enforcement is is spotty and God help you if they do not like you. If they like you you can get away with anything.

one month ago

[1 Agree](#)

Absolutely AGREE ! They are out of control as an advisory committee. Years ago resident went before the planning board to get a permit for changes to her home, she got a resounding no across the board. A few years after being on the Conservation Committee voila no problem ... permits granted.

one month ago

Walkways and bike paths would be lovely. It would be nice for residents to have easier access to the rec building and parking, without having to call or go to the town hall first. Look into new tech innovations.

one month ago

[1 Agree](#)

too many old houses are being torn down to build mansions. It's ruining the historic character of the town. The state needs to improve and maintain the two fort in town. They are very historic and the state is doing little to preserve them. Too many loud, speeding motorcycles in town plus racing bicycles which almost run down pedestrians.

one month ago

[1 Agree](#)

Like it or not we are sight seeing destination :( I have often wondered why bicycles are allowed to go so fast ... same road same rules ?

one month ago

Need safer walking/riding

one month ago

[1 Agree](#)

Safe path to connect neighborhoods would add a lot.

one month ago

I'm concerned about the proliferation of docks and boat houses in private properties. Although state regulates they look to towns for local control and input. There are no questions addressing this aspect for residents to comment on.

one month ago

No comment

one month ago

We need to have more programs for kids and seniors with the use of the Rec Building. There should be more access to this for residents only. We don't need to have so many people crammed into the Common in the summer as it takes away the atmosphere.

Not everything is about the money. The Conservation Committee does a great job but there is no enforcement. This has always been an issue. We also need more education for residents on storm preparedness, and cutting trees on land especially waterfront. The PD does a great job but I do think the speed limit needs to get lowered. The Fire Dept. does not educate the residents on storm preparedness, and CPR and first aid classes needed for all residents. The fire dept. used to bring us a sense of community and it no longer does that.

one month ago

The speed is not honored on many of the streets although the police department does a great job at monitoring the speeds.

one month ago

Why isn't the recreation building more accessible for resident use? It seems like an amazing resource that mostly goes to waste. We desperately need a continuous and dedicated walking/bike route through town (SafePath) to keep our residents safe.

one month ago

Town buildings including the recreation building would benefit from being updated. We all would benefit from an upgrade.

one month ago

I think New Castle is trying hard to keep the "small town" feel but I think it is getting harder to maintain that as more people with money set their sites on living here. Some of the newcomers, unfortunately, seem to want things their own way with little thought to how that impacts the whole community.

one month ago

Could use increased use of the rec center to offer senior activities - exercise classes, pickle ball, other classes associated perhaps with senior centers nearby.

one month ago

The town should make it a priority to purchase any property we can to preserve open space. I've heard the property for Coast Guard housing may come up for sale and we should do everything we can to buy this. In addition to having more park space, the housing could be used for workforce housing. Durham residents were so smart when they purchased Wagon Hill. Although some taxpayers pushed back at the time, it was a wise choice. It's great to have a park enjoyed by all instead of a massive housing development.

one month ago

Underutilized rec building - difficulty in reserving the gym space. Perhaps an on-line registration system instead of calling town hall?

Effective use of the recreational building for meetings - the gymnasium needs a major upgrade to the audio system

Upgrade bathroom facilities at the Commons.

Create a walking path that follows outer boundary closest to Wild Rose Lane -

one month ago

With the reference to "traffic speed" that would imply that cars are the biggest safety issue on the roads. To the contrary, it's all the other 'obstacles' that present themselves on the road which cause the greatest risk to safety.

one month ago

It is completely unacceptable that we don't have EMT service on this island at all times. I heard first hand about an incident in December where the EMT's couldn't find a person's home with a heart attack victim in it !!! How many elderly residents, important elderly residents do we have on this island ? A friend had to run down the street to find the ambulance .

one month ago

I'm most concerned about the unsafe walkways and I agreed that teardowns should be curtailed. Just because the houses are not in the historic district doesn't mean newcomers should be able to tear beautiful houses down.

one month ago

Pedestrian safety is a huge concern. The Town should be funding the widening of the roads and bike lanes where possible.

one month ago

they would be widening them into peoples living rooms...

one month ago

Fort Stark should be preserved because of its important contribution to United States and Island history. The present condition is a sad commentary of what we value.

one month ago

i did not know we have a town beach

one month ago



Do we have a reliable method for the way we account for cash collected at the Commons? It's a cash cow that seems to rely heavily on trust.

one month ago

Enforcement of off leash dogs in the Commons, the beach, Ft Stark, really everywhere but Town Landing.

one month ago

pedestrian and bike access limited. Don't make oversized bike lanes like Portsmouth; it impedes traffic.

one month ago

We must be careful not to change the conservative nature of our little town with expensive, unnecessary investments which appeal to only a small percentage of our population, regardless of how vocal they are.

one month ago

The causeway disruption during storms is concerning from a public safety perspective. Within the next 10 years, we need a solution for that issue so that first responders can access the island during storms. Making sure the state of New Hampshire executes a plan address the causeway within the next 10 years should be a priority. Secondly, the condition of Ft. Stark and Ft Constitution is sad. The state is investing in Ft. Stark, but there's no plan for Ft Constitution, which is dangerously in disrepair. Both need substantial investment from either the state of NH or the federal government.

one month ago

Please note that I moved here during Covid, so I am not familiar with all of the regular recreational events that may have occurred if Covid hadn't happened

one month ago

The Historic District needs to be enforced for people moving to New Castle. Fort Constitution...when will that open again? A shame it's closed.

one month ago

Should consider adding the capability of playing pickle ball inside the rec center and in the Common, if a site can be determined.

one month ago

Would like to be able to walk dogs in the Common year round and off leash on the beach early morning and late afternoon. Also would like to see graffiti removed from buildings in Fort Stark

one month ago

New Castle doesn't try very hard for its older residents or for the children. The library and historical society runs programs on a limited basis for townspeople. Being an old folks town, parents must often transport kids to Rye or Portsmouth for activities and then are often charged more because they are not that towns residents. I know we have tried summer programs in the past years with limited success but it still is irksome

one month ago

The "tear-down" mentality is destroying the character of the village

one month ago

I have not used the town facilities much

one month ago

The school zone should be marked so that speeders can be ticketed.

one month ago

It's marked and there are blinking lights. Problem is enforcement.

one month ago

The Historic district needs to be expanded down Portsmouth Avenue in town center and over to the Wentworth. What has been done in some of these areas takes away from our beautiful town.

one month ago

I'd really love to see if pickle ball would be possible in the rec center. Pedestrian safety has always been an issue here. I'm grateful it's being addressed now. People should feel safe walking. It gets them out of their cars, and into better shape. I like that non residents come to walk and ride around our island, including the hotel guests, but it needs to be safer. Anything to encourage people to get out and walk.

one month ago

Start a walking club at the Common must be about a mile around the loop, could be fun

one month ago

I feel like building in town is happening at the expense of trees and other natural elements we need to preserve soil, prevent erosion, and provide management of our changing climate because people want a view or a larger house. This ties in with my dissatisfaction with conservation because the commission does not have much authority to control or deter people from cutting down trees or putting up curbs, or building into or too close to the wetlands. Regarding traffic speed, the police are rarely in key spots on island to catch people who fly through at 35 mph or more. The paving that was done last summer is already deteriorating at the edges as it was done over the existing road. I don't feel that, with the rising sea levels and king tides, that our causeway or some of the lower lying roads are prepared. I wish I felt we were doing more to prepare for the problem of rising water.

one month ago

I love the public outreach that notifies us of what is going on.

one month ago

The Town has done a great job accommodating its residents but there are handicaps which may or may not be overcome, such as sidewalks in the downtown area.

Senior services have been challenging, since we need to incorporate more money and/or partnerships (which will also cost money) with other Towns. Over the years it has been difficult to partner with surrounding cities and towns. More effort, perhaps via a committee, should be stressed since we do have a large senior population in Town.

one month ago

Forts Stark and Constitution need to step up their games. They are both in a sad state. Time to clean them up.

one month ago

There is much room for improvement in this town. The water project, which cost taxpayers 5 million dollars, did not provide the water flow that was promised to taxpayers. I have heard that the sewer system is on the brink of catastrophic failure, and was so poorly engineered that Portsmouth doesn't want to take it over. Additionally, as a runner, I have almost been hit by a number of speeding vehicles, including by the town's own fire truck.

one month ago

I wish there were less building going on - more houses, I mean. When you look at aerial photos from maybe 15 years ago and compare the number of houses, and the size of houses, to now, it is shocking. We are losing all the wild areas that are part of the "specialness" of New Castle. A totally other subject is the number of dogs off leashes on the beach, the common and above all the Town Landing. Leash law should be enforced---and if there is a "dog park" at the Town Landing, it should be fenced (though that would be ugly!)

one month ago

Lowering of speed limits in the summer should be extended all year. More attention needs to be paid to the speeding of commercial vehicles

one month ago

Would like to see the recreation building more accessible during the winter to more than a few groups. Could we have more open access to Tennis and also include Pickleball. Perhaps the recreational building could be expanded to include a Pickle Ball court, a small gym and indoor play equipment for children.

one month ago

speed limits are fine, but need continual enforcement. Would like some easier way to get to town beach off season as it is very difficult once the storms move the rocks.

one month ago

Bicycle paths a good idea where possible.

one month ago

Pre-pandemic access to the Recreation was very difficult. Calling the town office on a M & W between 8-12p if you were lucky enough to get someone to answer, usually required multiple phone calls. A nice alternative would be to create a sign up genius or online booking system. It was under utilized by most residents because access was made to be very difficult. I would add that more access to young residents would be wonderful, however, there is a large group of young children that are not supervised and play throughout the Island. Wonderful to be able to roam free but indoors in public, there should be an adult present. In the past, I have seen kids unsupervised. There are also no programs for senior citizens. If the main gate by the Commons is closed it makes it very difficult to access the pedestrian entrance, via wheelchair. The Fort Stark Park is another under utilized park with not enough parking or bathroom facilities.

one month ago

I would love to see leashed dogs allowed in the common year round.

one month ago

.

one month ago

Rec building use policies were onerous pre-COVID and current (must go in person during the workday to request code for later) rather than making it bookable by a \$500 web site. Many times when the weather was poor, I could have used an hour with my kids in there but it is a Saturday and the Town Hall is closed. During COVID, the building was closed for single family use for about two years. It never made sense and the whole town lost use of a precious asset during a most needed time for it.

one month ago

Fewer teardowns/modern rebuilds. Island-wide pedestrian and bike lanes.

one month ago

I live in a architecturally diverse neighborhood ... love it

one month ago

Not sure how practical, but would it be possible to annually add sand to the beach at the Common?

one month ago

good question

one month ago

N/C

one month ago

The Town does a good job keeping things running well.

one month ago

The enforcement of the speed limit is terrible. This might be my number one complaint. Equally guilty of driving to endangerment are contractors, landscapers, school buses, tourists and yes, residents. Cars speed right past a parked police vehicle without punitive action. If the Common is open there needs to be bathroom facilities. If the bath house can't be open, we need to provide porta potties year round. It's a health issue. Conservation efforts need to be more consistent.

one month ago

Pedestrian and bike safety hinges on motor vehicles slowing or using brakes rather than trying to squeeze around . Can't make the streets wider.Speed bumps or just continue patrol.

one month ago

Fort constitution should reopen immediately, including access to the rocks to view the water. Speed limit should not exceed 20 until sidewalks are installed (e.g., the area alongside old Tarbell property is now unsafe due to loss of shoulder for pedestrian use; cars can't see opposing traffic around curve). There should be more caution signs or electronic speed signs. Island needs special rules to permit meaningful protections from sea level rise.

one month ago

We have very little control over state and federal property but doesn't mean the town doesn't have a voice. Fostering good relationships with these entities is crucial. Would like to see a recreation committee become active again and to offer more programs for both young and old.

one month ago

Effective use of the recreational building for meetings needs a major upgrade to the audio system  
Traffic speed in the center of town is excessive; perhaps "lining the pavement" would increase awareness of drivers  
Regulation/enforcement of the single file rule for bikes and motorbikes

one month ago

The road is not safe for pedestrians in many places. The corner of 1B near the Coast Guard station is especially dangerous. I would like to know more about emergency preparedness in light of more frequent bigger storms.

one month ago

We need sidewalks for pedestrians!

one month ago

Have never used recreation building - not sure what's there  
Would like to see For Stark improved

one month ago

Please do not expand public parking only to bring in more tourists.

one month ago

The Commons needs to be cherished. Our little island needs to maintain its feel. There is no advantage to making the common open to buses, tours, and people who build up their town to make New Castle the nearest place of peace. Portsmouth should have to pay a far dearer price than just paying a tiny entrance fee. There should be a quid pro quo, such as membership for every family for the Portsmouth library

one month ago

We could use a better system for scheduling tennis at the rec. center.

one month ago

Other than walking along 1B which is very dangerous in spots I thoroughly enjoy walking around town, the common and beach.

one month ago

The historic district is too expansive and does not seem guiding by historic significance.

one month ago

I think it should be easier to access and book the rec building for resident use. I'd like to see the town address pedestrian safety.

one month ago

We need faster speed limits.

one month ago

Don't increase speed limits. Roads are too narrow, and bendy to do that safely.

one month ago

Faster speed limits? What about older children who must use our shoulderless roads to ride their bikes to school, work, and play? What about our elderly community who go for long walks during all seasons? What about the community cycling groups? It's a 1 mile stretch of road, ... the only vehicles that shouldn't be expected to factor the current speed of roughly a single mile of roadway is a police vehicle, ambulance, or fire truck (a few physicians.) Everyone else can put the safety of children, friends, our elders, and collective community ahead of bad time management.

one month ago

I would be more satisfied with the preservation of the historic district if it were expanded.

one month ago

Conservation efforts are both autocratic and insufficient. Ft. Stark is a beautiful park but marred by stretches of chainlink and crumbling buildings. Town Common is also marred by chainlink fencing. Would love to see more utilization of the space: pickleball courts, safe playground. Rec Building has poor acoustics.

one month ago

The large number of motorcycles is very disturbing

one month ago

The Police Chief, who lives in the Common, is a motorcycle enthusiast....

one month ago

5. How concerned are you with the following issues in New Castle in the next 5, 10 or 20 years?

*If there are concerns not listed here that you feel are important please elaborate in the comment section.*

	<b>Very concerned</b>	<b>Somewhat concerned</b>	<b>Not very concerned</b>	<b>Not at all concerned</b>	<b>No opinion</b>
Emergency vehicle access to New Castle	22% Very concerned	36% Somewhat concerned	27% Not very concerned	12% Not at all concerned	3% No opinion
Evacuation routes on and off New Castle	21% Very concerned	30% Somewhat concerned	36% Not very concerned	11% Not at all concerned	2% No opinion
Flooding	29% Very concerned	44% Somewhat concerned	18% Not very concerned	7% Not at all concerned	1% No opinion
Noise	19% Very concerned	34% Somewhat concerned	32% Not very concerned	13% Not at all concerned	1% No opinion
Over development	45% Very concerned	30% Somewhat concerned	18% Not very concerned	6% Not at all concerned	1% No opinion
Water pollution	31% Very concerned	42% Somewhat concerned	20% Not very concerned	6% Not at all concerned	1% No opinion
Sea-level rise	42% Very concerned	39% Somewhat concerned	11% Not very concerned	7% Not at all concerned	1% No opinion
Coastal storms	40% Very concerned	34% Somewhat concerned	19% Not very concerned	5% Not at all concerned	1% No opinion
Traffic	32% Very concerned	46% Somewhat concerned	17% Not very concerned	5% Not at all concerned	- No opinion
Tax rate	19% Very concerned	41% Somewhat concerned	32% Not very concerned	5% Not at all concerned	2% No opinion

146 respondents

Hope we can keep the old world charm of this seaside community and not over build with huge houses. This is a small Island near a vibrant historic city.

one month ago

[👍 6 Agree](#)

too many houses are being torn down and modern ones put up in their place. That'll ruin the historic nature of the town.

one month ago

[👍 6 Agree](#)

Who will be the first among us to sell for less than top dollar with an addendum in the Purchase and Sale that states the new owners are not allowed to tear down their new home unless they rebuild in the same foot print with a home in a similar architectural style? I agree it's a dilemma , the very wealthy just send in armies of lawyers.

one month ago

[👍 2 Agree](#)

I applaud the library director because the library is the heart of the town. A great center for sharing culture and friendships.

one month ago

[👍 2 Agree](#)

On the surface New Castle appears to be an idyllic place to live, and many of us feel that this is true. However, residents also face an increasingly uncertain future, indicated by the questions asked in #5. There are the stresses caused by excessive development, degraded natural resources, climate change and much else. These will all require thoughtful attention and action in the years to come.

one month ago

[👍 2 Agree](#)

Sea level rise should be a concern.

one month ago

[👍 2 Agree](#)

Sea level rise and storms should be a concern for us all and problematic. In my answers before that overbuilding is certainly an issue as no open land left to build. This is a supply and demand issue and thus with little land or homes for sale drives the prices to skyrocket. Many issues asked in this survey that the town has little control over and liability plays an enormous factor.

one month ago

[👍 2 Agree](#)

Holding tax rate down is critical to continuing to make New Castle accessible to average and fixed income people, and a town where people actually live, and prevent us from becoming another Nantucket. In other words, low taxes is about more than saving on taxes, nice as that is.

one month ago

[👍 2 Agree](#)

prohibit the use of gas powered leaf blowers by landscape companies. Electric blowers are much quitter and are readily available.

one month ago

[👍 1 Agree](#)

We need to get serious about addressing the very real implications of sea level rise and climate change.

one month ago

[👍 1 Agree](#)

I think sea level rise is a tough issue, but it must be addressed if New Castle is to survive in its current form.

one month ago

[👍 1 Agree](#)

The sea level rise is a big concern. There are no sea walls on River Road and the water during storms and high tides is coming onto the lawn.

one month ago

[👍 1 Agree](#)

Traffic noise is a big concern with me living on 1-B.

one month ago

[👍 1 Agree](#)

The taxes have been rising as appraisals are being redone. We cannot be like Portsmouth and drive out the people who have lived here forever.

one month ago

[1 Agree](#)

The increase in house valuations drives longtime families out of town and prohibits young families from moving in. Our school may be highly rated but without children in attendance will it survive?

one month ago

[1 Agree](#)

Climate change will exacerbate most of these items. Almost all need attention.  
With respect to noise, barking dogs are among the most annoying problems.

one month ago

[1 Agree](#)

Agree to focus on environmental preservation.

one month ago

Although we know sea levels are rising, I see little regard by the town for waterfront regulation.

one month ago

No comment

one month ago

Potential pollution is a big issue here and I think we need to keep on top of it. Emergency vehicle access has always been an issue but even more so now.

one month ago

We need to do more to prepare as a community for intense weather events.

one month ago

See number of teams in concerned category.

one month ago

Re noise - gasoline powered leaf blowers are deafening! I'd like to see them outlawed.

one month ago

Noise pollution - increased number of back channel boats and also constant noise from landscapers.  
Please ban gas powered leaf blowers !  
Concerned about excessive number of trees that have been cut down on our island.  
We have allowed too many homes to be torn down and then rebuilt as overly large McMansions.

one month ago

It is completely unacceptable that we don't have EMT service on this island at all times. I heard first hand about an incident in December where the EMT's couldn't find a person's home with a heart attack victim in it !!! How many elderly residents, important elderly residents do we have on this island ? A friend had to run down the street to find the ambulance .

one month ago

climate change and higher sea levels are a big concern.

one month ago

Our BIG problem in the future is going to be coastal flooding.

one month ago

water pollution is a problem and without year round bathroom facilities at the Common it will continue to be a problem with people going to the bathroom there and the people who don't pick up after their dogs.

one month ago



Flooding of the causeway is a big concern. Motorcycle noise is a problem.

one month ago

these are no big issues for me

one month ago

Noise- Limit fireworks. People don't need to set them off the entire week of July 4th plus every other occasion they deem a special occasion.

one month ago

Hampton has been flooding worse than we have, for decades. Yet, every king tide they are in the news. Compared with other highway projects, elevating the causeway pavement height 1-2 feet in the next few decades should be easy. The causeway used to be part of the river, so maybe nature will take it back...With access only from Rye, we wouldn't get the through traffic!

one month ago

Coastal Storms and Sea Level Rise will impact all of us. All you needed to do was walk the beach and Commons after the January nor'easter to see how powerful it was.

one month ago

All of these issues could become a problem in the future, but I trust in our Selectmen and their ability to minimize their effect on our quality of life.

one month ago

Resilience and mitigation during storms needs to be prioritized in the next 10 years. Over development is not likely. The tax rate will remain stable and frankly, it is among the lowest tax rates in the entire state of NH. Traffic ebbs and flows, yes it increases substantially in the summer months, but subsides just as fast after labor day.

one month ago

Tax rate has been reasonably managed over the past several years. May be time to provide for more capital improvements on the island. Sewer and water upgrades have been necessary. Roads need to be maintained. Common area should continue to be an important recreation area. A 2 pickle ball courts could be a good addition.

one month ago

Many of the above questions do not have any way to fix them, such as evacuation routes, it's 1B or the waterways

one month ago

The noise level from illegal pipes on motorcycles is very annoying. I suggest we have a fund for supplying the New Castle Police with a noise meter with the necessary calibration to enforce the noise ordinance

one month ago

X

one month ago

One can just as easily argue that the low tax rate has driven the dramatic increase in real estate costs which are much more likely to keep average and fixed income folks out of New Castle.

one month ago

The Rye bridge needs to be fixed!

one month ago

I am grateful for the wetlands commission and for limitations and restrictions on building when it comes to environmental impact. I do get concerned which houses getting ing larger and the strain that puts on our infrastructure. I feel sad about how Portsmouth has got overdeveloped. I would hate that trend to spill over into New Castle.

one month ago

See my response above. We aren't doing enough to address any of these issues. We need to preserve the trees to prevent erosion and help provide protection from increased temperatures. We need our wetlands to protect our island from flooding and to clean the water of the pesticides people apply. Over development could be upon us as we let people do what they want. We need to educate and understand the implications of our choices.

one month ago

So many of these are global issues as well. We need to learn from knowledgeable, fact based organizations

one month ago

Emergency vehicles to Town should be addressed via public notices and meetings and perhaps a "Committee" to address not only above but issues relating to senior involvement and emergencies and evacuations.

Our emergency route over the Causeway, via Marcy Street and Maine to get to Dover is "Ridiculous". There is no way all of the cars and residents can get out if needed to ASAP. Better to stay or have a boat handy??

Most of the above should be handles by State and local officials - working with residents- to better understand how individual owners and Town officials (and Boards) can better implement measures to address the various areas of Town and hazards involved in those areas.

The noise level is an exception and also can be addressed along with road upheaval and repairs. There is a "Constant" building (and tear down) of housing, along with additions, that becomes a constant source of irritation, to say the least. What can be done is a conundrum but it does contribute to traffic, noise and road breakdowns.

The Town has been very fortunate to have and had Selectmen and other Boards who contribute to the control of our taxes. Kudos and Best Wishes to continue this practice.

one month ago

The ancient draw bridge needs to be replaced immediately. It may be historic, so take picture and move it to a museum, because a fully loaded fire tanker truck will not be able to cross that bridge when we need it. It is an accident waiting to happen. Use some of the millions of dollars of infrastructure funds to get it done now before someone dies.

one month ago

NO COMMENT

one month ago

I really enjoy the reduction in traffic when the causeway is impassable due to the flooding, which seems to be happening much more frequently.

one month ago

Eliminate the Police Department and contract shared services with Rye. New Castle is too small for full-time police officers.

one month ago

Obviously the causeway will need raising. I greatly appreciate that the Town puts the stepping stones from Ocean Road to the beach back every spring. Ond, also, let me say I think the town did a great job this year on making the roads safe during snow and ice storms.

one month ago

Hope we can keep the charm of a small town in the future. Most of the rest we have no control over.

one month ago

Over development is of top concern

one month ago

Regarding pedestrian safety, If any sidewalks or walkways are to be constructed let the State of New Hampshire do the work and bear the cost, rather than to put that burden on the townspeople, either by private donations and/or by increasing our taxes.

Taxes can only remain reasonable if our spending is kept under control. Be realistic of the services expected from the town. I am concerned over the fact that many new residents see our tax rate as a "bargain" so they care little about seeing it rise. This issue will only increase in the future.

one month ago

We will be experiencing more air and noise pollution due to Pease. The motorcycle and boat noise in the summertime is getting worse (jet skis now too).

one month ago

No comment

one month ago

Bring back volunteer fire/EMT.

one month ago

We need to ban gas leaf blowers the landscapers use. Not only are they terrible for the environment, they cause noise pollution equivalent to a plane taking off. Many towns across the country have voted to prohibit them. <https://www.nytimes.com/2021/10/25/opinion/leaf-blowers-california-emissions.html?referringSource=articleShare>

one month ago

two biggest short term issues from this list is over development (tree cutting gone wild!) which is changing the nature / feel of the town and traffic speed / noise. biggest long term issue is sea level rise and its shocking that there is no solid plan to update the causeway

one month ago

Traffic and noise. Fine overly loud motorcycles and people who ride in packs both on bicycles and motorcycles. The roads aren't wide enough to accommodate people riding in packs plus pedestrians.

one month ago

.

one month ago

Causeway can flood or fill with debris in storms; should be addressed.

one month ago

N/C

one month ago

Regarding comments about taxes, have we considered something similar to Florida that gives a property tax break for eligible homeowners if it's their primary residence, the Homestead Exemption can reduce the taxable value on your primary home as much as \$50,000. Additionally, your assessed value cannot increase more than 3 percent annually once you've been granted a homestead exemption. Something like this would limit taxes for those who wish to stay in their homes without worrying about unexpected increases due to gentrification.

one month ago

We need to pay careful attention to properties being redeveloped along the water and wetlands. Many would not meet setback requirements if they were built today yet people seem to be making them even bigger when they rebuild. It's concerning that we must rely on ambulances from Portsmouth. The response time really can be a matter of life and death. We should consider bringing back volunteers.

one month ago

living on the river/ocean we need to accept the risks associated with having this spectacular location. Limit the development, but horse is out of the barn on that one

one month ago

New Castle is getting overbuilt, some restrictions need to be set up

one month ago

Wentworth bridge needs to be fixed for fire equipment access

one month ago

I share the concern that our town is not affordable for people we count on to teach and provide essential services. I am also interested in planning for potential effects of climate change (storms, flooding).

one month ago

can't change the weather

one month ago

Concerned about sea level rise - but whatcha gonna do, build dikes?

one month ago

Some residents complain about taxes. If that was true they would move elsewhere but they stay. That is because our taxes are artificially low. Our overall tax burden is extremely low.

one month ago

I think the town does a good job.

one month ago

See above

one month ago

I am seeing local road and the causeway flood in storms. We need to address those areas.

one month ago

There still seems to be an attitude among many that the tax rate should remain low, essentially forever. No one likes to pay taxes, but you can't expect efficient town services without having sufficient staff and paying them a prevailing wage. Town government is ever more complex than ever, given all the external requirements levied by state and federal government.

one month ago

too much growth

one month ago

All of the above are important issues to be addressed in the plan; perhaps with a staggering timeline.

one month ago

!

one month ago

I'm starting to see that insurance companies are not covering coastal communities

one month ago

6. Provide your opinion related to the following statements regarding items New Castle should do over the next 5, 10, or 20 years:

*If there are other items that you feel are important for New Castle to address, please elaborate in the comment section.*

	<b>Strongly agree</b>	<b>Agree</b>	<b>Neutral/ No opinion</b>	<b>Disagree</b>	<b>Strongly disagree</b>
Allow more Accessory Dwelling Units (e.g. in-law suite, granny flats)	16% Strongly agree	23% Agree	28% Neutral/ No opinion	20% Disagree	12% Strongly disagree
Expand multi-family housing opportunities (buildings with 3 or more dwellings)	7% Strongly agree	7% Agree	18% Neutral/ No opinion	42% Disagree	27% Strongly disagree
Allow more flexibility in locating independent power supplies (e.g. generators, solar panels)	29% Strongly agree	32% Agree	24% Neutral/ No opinion	8% Disagree	6% Strongly disagree
Regulate short-term rentals (i.e. rentals less than 30 days such as AirBnBs)	41% Strongly agree	33% Agree	13% Neutral/ No opinion	9% Disagree	3% Strongly disagree
Protect wetlands	66% Strongly agree	28% Agree	5% Neutral/ No opinion	1% Disagree	1% Strongly disagree
Preserve and protect historic structures	64% Strongly agree	30% Agree	6% Neutral/ No opinion	1% Disagree	- Strongly disagree
Encourage tourism	8% Strongly agree	16% Agree	27% Neutral/ No opinion	29% Disagree	20% Strongly disagree
Offer more town services online	30% Strongly agree	46% Agree	23% Neutral/ No opinion	1% Disagree	- Strongly disagree
Renovate Town Hall to increase the building's functionality.	34% Strongly agree	33% Agree	20% Neutral/ No opinion	10% Disagree	2% Strongly disagree

146 respondents

we don't benefit from tourists other than the GIC fee. they are welcome, but why draw more in. All for solar, wind etc. There is no reason to ban in the historic district, just make sure it doesn't stand out too much

one month ago

[7 Agree](#)

Let's keep the Selectmen's meetings on zoom and expand that to more town boards. It encourages more resident participation.

one month ago

[6 Agree](#)

Not sure I agree. Having watched several town board meetings on zoom, I don't think it's fair to town volunteers that they have to be broadcast on YouTube for all to see for eternity. If you care, show up for the meeting. If only out of respect for those who serve us in these roles.

one month ago

[5 Agree](#)

the town hall should no longer be used as the primary location for town business. Fix it up / preserve it yes but re locate the town offices to the school building

one month ago

[5 Agree](#)

To move the town offices to the school building you would either have to build a new school or close the school all together. Are you suggesting that we close the school? The school is central to the vitality of New Castle and should always be a priority for so many reasons. The attendance will always ebb and flow but keeping the school vibrant should always be the focus. Years ago the attendance fell to just 18 kids but by the time our kids attended the school it had blossomed to 70. We need to always keep the long view when considering our support for MHT elementary school.

one month ago

The current above-ground electric supply is ugly and a severe blot on the townscape. Furthermore, it will be vulnerable to damage in the increasingly severe storms that we will experience in the future. Attention should be given to putting all electric lines underground.

one month ago

[4 Agree](#)

I am very concerned about the air B&B phenomenon. In my neighborhood (Walbach St.) there is the Inn, there is an Air B&B, and there is Province House, which is only rarely occupied by its actual owner. My neighborhood is no longer what it was. My neighbors are now mostly passing strangers, and that is not what I want from New Castle. I think owners should be able to rent out their house if they are away for a month or two, but this constant coming and going of strangers is not good for New Castle.

one month ago

[3 Agree](#)

Believe we have enough tourism  
No rentals under 30 days  
Modifying units to make inlays suites etc will take away from the charm and character of New Castle

one month ago

[2 Agree](#)

Tourism seems to put much stress on The Common and Fort Stark... The volunteers and town do a great job at maintaining these areas, but they can only do so much in cleaning up trash, graffiti and vandalism which unfortunately increases during the summer months.

one month ago

[1 Agree](#)

Please do not focus on tourists! This is a village community and the emphasis should be on residents and enhancing the quality of life for them.

one month ago

[1 Agree](#)

The Town Hall is an issue that needs attention. It is the hub of community activity in New Castle and the people who work there, many of whom many hours of their time gratis. They should be able to work in an environment that is comfortable, healthy and safe.

one month ago

[1 Agree](#)

Our small school needs to remain open. Losing a school changes the identity of a community. We do not need more tourism - it just increase traffic and noise.

one month ago

[👍 1 Agree](#)

The Town Hall desperately needs repair.

one month ago

[👍 1 Agree](#)

town hall hours could be expanded

one month ago

[👍 1 Agree](#)

Time to consider a town manager. We would still have a Selectboard but running this town is a full time job. To preserve our small town feel and comply with increasing demands we need to hire a professional who has been trained in all the aspects of running a town. We need to be willing to pay competitively so we get qualified applicants we are able to retain. We do not need an administrative assistant. This link explains the difference and the process to get it to town vote.  
<https://www.nhmunicipal.org/town-city-article/town-managers-vs-town-administrators-what's-difference>

one month ago

[👍 1 Agree](#)

Limit rentals to long term. The short term rentals change the feel of the town and neighborhoods. It's especially difficult to control behavior of visitors who have no stake in neighborly relationships.

one month ago

[👍 1 Agree](#)

In an effort to increase diversity in town, I would love to see some low-income/ subsidized housing. By expanding housing options, businesses could expand and we could share this gem of a town with everybody! The new fire/police building is huge, perhaps space could be found in there, I heard they are already allowing people to sleep in there.

one month ago

[👍 1 Agree](#)

Keep New Castle as a small town without encouraging tourism. Because of parking issues, having more town services online would be helpful.

one month ago

[👍 1 Agree](#)

To the extent there is open land in New Castle, let's preserve it.

one month ago

[👍 1 Agree](#)

Loud gas generators don't help. Allow/encourage solar everywhere, require it for all new construction. Put a plan together for Solar or wind power for all town facilities. Put an array at the Common, wind turbines at fort stark. We have heard about the push back on historic buildings, but a solar array on a roof does not bother me as much as the vinyl and aluminum or asbestos siding some old houses here have that is certainly not historic. There historically were no power lines running to some of the oldest homes here but they did not stay without power, that got added to modernize living, just as solar can be added now to reduce emissions in the environment. Preserving history can be balanced with modern progress.

one month ago

[👍 1 Agree](#)

I'm not a fan of having New Castle overrun with tourists. Just keeping it a pleasant place to live with some tourism would be ideal. Having one main road makes me cringe at the thought of encouraging mobs to come.

one month ago

[👍 1 Agree](#)

No issue with true in-law apartment, but it is too easy to turn them into short term rentals. Don't do that unless also restrict short term rentals. No in-law apartment where parking is on street - can't increase more residents parking on streets.

one month ago

[👍 1 Agree](#)

New Castle is a special place and I would prefer if it maintained more of a single family/year-round focus for the residents. Short -term rentals should be minimal.

one month ago

[👍 1 Agree](#)

Do not encourage tourism. Crowded enough as it is.

one month ago

[👍 1 Agree](#)

Town services on line are slowly making progress such as registering vehicles. Most residents don't know how labor intensive it is to bring these services to the residents. Automation of Paying water/sewer bills, taxes, permits and other fees should on the horizon of town services.

one month ago

[👍 1 Agree](#)

Town hall has a tremendous potential that has not been realized.

one month ago

[👍 1 Agree](#)

Zoning for historical look is important

one month ago

[👍 1 Agree](#)

Renovating town hall should be a priority in the long term capital budget but not at the expense of increasing property tax rates over the long term.

one month ago

[👍 1 Agree](#)

There should be a moratorium on development. As long as there are slime backed developers waiting with money to put into people's pockets, there is always a risk

one month ago

[👍 1 Agree](#)

While I would also not like to see significant development, this is not an appropriate way to refer to anyone. Most people who made it to New Castle got here by earning an honest living.

one month ago

This town is a jewel, keep it that way.

one month ago

[👍 1 Agree](#)

Move town hall online. Use digital identity certificates for privacy & security.

one month ago

[👍 1 Agree](#)

We desperately need sources of renewable energy and to get away from fossil fuels. Generators are required but not the answer.

one month ago

[👍 1 Agree](#)

I think we need to make it more affordable to live here and or stay here so if adding ADUs allows people to stay in their homes, I'm ok with it. I also think people should be able to do what they want with their own house, including rent it out.

The town hall definitely needs online services and capabilities and town hall needs renovation attention!

one month ago

[👍 1 Agree](#)

We need to protect and preserve our charming and nostalgic community.

Improving online services will be a welcome benefit and reduce Town Hall foot traffic. Renovating the Town Hall is necessary for health and safety of Town Administration. Encouraging tourism, in particular to the Commons, should be done mindfully. I'm not sure the community could handle more traffic.

one month ago

[👍 1 Agree](#)

Preserve the natural environment where we live as much as possible.

one month ago



Town offices could be utilized better with longer hours. No renovation is needed for a town of this size. Not online services could be helpful in this regard. We need to do more to protect what remains of our wetlands and marshes by prevention of overdevelopment of waterfront properties and docks. We've all heard the saying that the state hasn't seen a dock it doesn't like. We need to retain local control and input or docking structures and boat houses will be built and we will look like several of the lakes in the state

one month ago

No comment

one month ago

We definitely should allow more accessory dwellings in town. We have an elder population and it helps them stay in their homes and have family stay with them.

one month ago

I disagree with the Town allowing any private building on Town or State Property. That is setting a precedent that could cause complications for years to come. Previously a resident had to move a wall that had been built on Town property and thus the precedent was set previously.

one month ago

I agree that Town Hall needs to be renovated, but do we actually need more space for civic functions? Seems as though the Rec Building is wildly underutilized as it is. We need to expand opportunities for local renewable energy ASAP--it's ridiculous to limit PV panel installations to non-visible locations in the HD. In Europe, panels are regularly installed on all kinds of buildings with far deeper historic roots, openly acknowledging the fact that old buildings routinely change and adapt to new uses and needs over time.

one month ago

The Town Hall desperately needs a complete renovation and Rec Center needs the windows replaced.

one month ago

I have left my opinions above. thanks!

one month ago

The town hall building could serve as a multi-function building: commercial space (including cafe) on ground level, town offices on 2nd level and possible a few small residential apartments on the 3rd floor. Expanded parking capacity could be added behind the church to accommodate this. This would serve as a catalyst for more a more active community center in town.

one month ago

New Castle should prepare for coastal storms

one month ago

Encourage more environmentally friendly efforts - composting, less noise and light pollution, less wasting of water and electricity, etc.

one month ago

Stronger regulation to prevent over building lots. Upgrade equipment to enable all meeting to be available on Zoom to encourage more participation.

one month ago

The town hall should definitely be preserved and renovated. Concern over water levels and Protection of property from high tides and storms is a big concern.

one month ago

We don't need more tourism. This is a residential community, not Hampton beachfront/restaurants/honky tonk. The Commons fortunately limits the number of cars, just like the State beaches. If they didn't, we might be overrun.

one month ago

I've lived in towns that decided to upgrade their town halls and most spent way too much money in doing so. We should accept the limitations of what we now have, assuming that our town offices are properly maintained and comfortable.

one month ago

Since I have commented on historic and protection of sensitive wetlands already, I will focus on Town Hall. Town Hall services will increasingly become available online. That is a smart long term decision the Town has already begun to invest in. Those services should start to come online in the coming years. The Town Hall needs substantial renovation. The untapped value of the Town Hall building is a treasure awaiting to be unlocked, if our residents agree to plan to bring the full building into use. It should also be a priority for the next 5 years - not 10.

one month ago

I think that preserving and protecting historical buildings is only sensible if it's not too expensive. We live in a universe where entropy is natural. If the buildings have good bones, yes, let's p&p. If the building gets toppled by a storm, let's embrace the forced change and do something new with the space.

one month ago

Actually, we don't have much of interest for tourists attractions, so let's not increase that

one month ago

The environment is of top concern given our proximity to the ocean

one month ago

I love the quaintness of town hall but recognize it's inefficiency. I'm sure there's a way it can be kept looking historic even if it's altered to function more efficiently. It's a lot of wasted space. If it's kept as big as it is, I'd like to see that space be able to be used by residents in some capacity. (Meetings, functions, office space rental?)

one month ago

We don't need more development or livable spaces on the island. But solar should be allowed and encouraged. It should not be limited to houses outside the arbitrary "historic district." Everyone should be allowed to save energy and cut back on emissions.

one month ago

Accessory Apartments are a must as some residents need more income, other residents need space for larger families or to accommodate returning family members. If done with involvement of Town Residents, restrictions, Town laws and environment can be taken into consideration to benefit neighbors and surroundings.

There is not much room, both households and cars to really develop multi-family dwellings. There seems to be more open space taken away and multi-units will deplete even more space and may cause traffic/parking issues. 2-family or duplex building would seem to address the problem of multiple family living or additional income.

Regulating short-term rentals should be considered since this is a "small community with small or no land availability or expansion and enough traffic/parking issues now. Turnovers and Air BnB's should be regulated BUT there should be input from residents and our local boards.

Environmental issues such as solar, etc. should be addressed carefully and perhaps in conjunctions with Portsmouth and surrounding towns to best address these issues for present and future use, cost and resident compliance.

Historic structures should be protected by Town Ordinance and financial resources if needed. However, with new and modern development of materials, etc. good consideration should be given to replacement issues, cost to owners and aesthetics. This is especially true of Town Hall. The siding on Town Hall should have been "replaced" with new and modern siding (which would also maintain the appearance we desire for our Historic Town Hall. Spending so much money on scraping, painting and repainting is a total waste of time, cost, taxes and disruption. New siding seems to have a longevity of 50-75 years.

Offering more Town services online is a necessity today. But, the written word, via mailed newsletter is needed to compensate for those who miss online notices, don't use the computer or as an extra reminder of what is going on in Town and what residents should know.

Finally, Why do we need to encourage tourism? We have enough traffic (both vehicular and pedestrian) to satisfy most of us.

The State park is on line, Route 1B is a State road and NOAA and UNH provide plenty of information to keep New Castle bustling.

one month ago

If town hall is renovated, it should include something that draws the community in.... ie small spaces for gathering, similar to the library. Could the library be expanded to house the town Hall??

one month ago

Close the school and renovate that building to house the town offices. Then restore the town offices to support the historic district initiatives.

one month ago

NO COMMENT

one month ago

Close the old Town Hall and move services to the Recreation Building. Ample parking, large meeting area, ADA access.

one month ago

Increase in tourism is not needed - the hotel takes care of that

one month ago

The addition of ADU's should not be much of a concern as our zoning ordinance is quite specific as to what can be built on a particular property. The zoning ordinance prevents unreasonable or excessive development. ADU's should be encouraged by those desiring to do so with the intent to help family members needing assistance. Townspeople should become better informed about the liabilities the town could incur by encouraging the addition of sidewalks throughout the town. While safety is important there are other practical issues that townspeople should take into consideration. If any sidewalks or walkways are to be constructed let the State of New Hampshire do the work and bear the cost, rather than to put that burden on the townspeople, either by private donations and/or by increasing our taxes. There are financial consequences and liabilities that should be considered. We've experienced short-term rentals in a number of dwellings over the past few years and this can lead to unpleasant issues arising amongst the neighbors. The town should institute policies and limitations regarding same. Our website have been significantly improved of late. Our Project Administrator Ken McDonald, has worked diligently to see this through.

one month ago

Historic structures, with the exception of private homes, should be protected. If the town wants to buy a historical home and keep it as is, they should open it up for tours in the summer.

one month ago

.

one month ago

My preference would be to focus on full time residents while maintaining a small town feel.

one month ago

I'm not an advocate of encouraging more traffic via tourism, multi family or ADUs as all will put more cars on the road negatively impacting pedestrian & bike safety.

one month ago

N/C

one month ago

See answers above.

one month ago

I don't favor encouraging tourism; it is already "overcrowded" in the summer

one month ago

How about Air bnb permitted for up to 30 calendar days per year. Residential zoning is not for business

one month ago

Town hall need full rehab to make use of the entire structure and help preserve the building for generations to come. It will also make more space for offices and meeting spaces for the community.

one month ago

The allowance of ADUs is required by state law.

one month ago

If you are not going to increase staff commensurate with the needs and complexity of town government, then offering more services online must be pursued. The town website is much improved thanks to Ken McDonald, but it needs even more improvement, if not replacement. The recent challenges regarding Town Hall (mold, etc.) are clearly an indication that we have not taken care of our "home." It wasn't too many years ago there was a warrant to do major renovation to the building and this was turned down because of the price tag. In retrospect, I believe that was shortsighted. As the Fram oil filter commercial went, "Pay me now, or pay me later." Our "later" is now.

one month ago

See above

one month ago

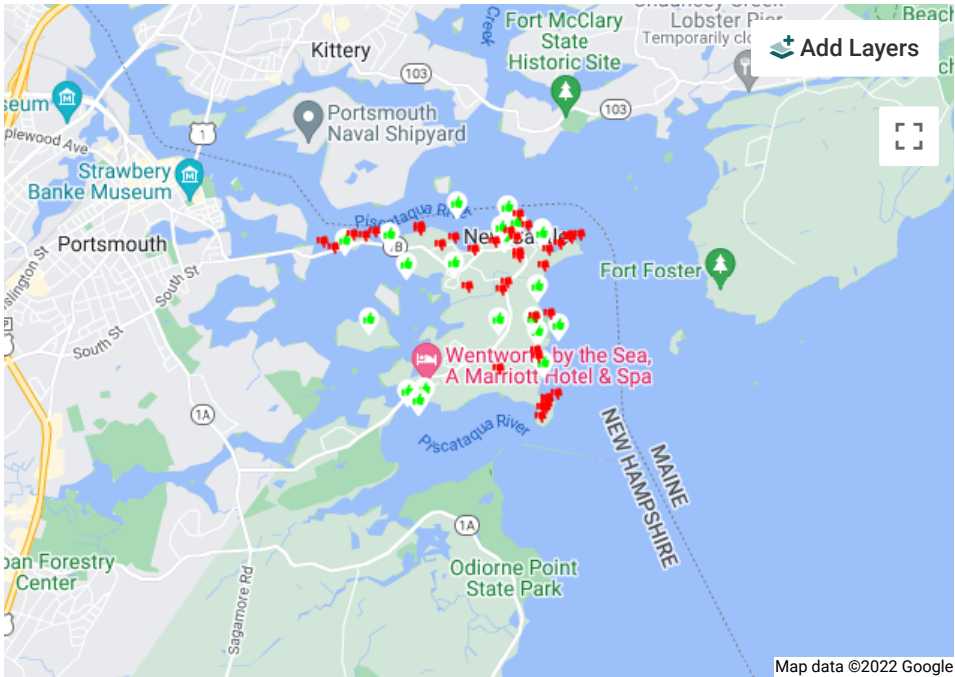
!

one month ago

N/A

one month ago

7. What areas of New Castle do you like or think need improvement? Please indicate the location(s) you like or think need improvement and explain why.



1B coming into town from Portsmouth needs to be raised as it will be under water. The bridge on 1B needs to be rebuilt so that emergency vehicles can enter from that end of the island.

Thought will need to be given to how properties within the newly drawn flood maps can be protected.

one month ago

[11 Agree](#)

Would love to see a town boat launch for public access.

one month ago

[5 Agree](#)

I'd like to see Safepath expanded, especially in the stretch from the common to pit lane.

one month ago

[2 Agree](#)

Years ago, someone was injured at the Fort and it's been closed to visitors since then. The state has done nothing to allow the fort to re-open. We need to get this historic site opened to the public again.

one month ago

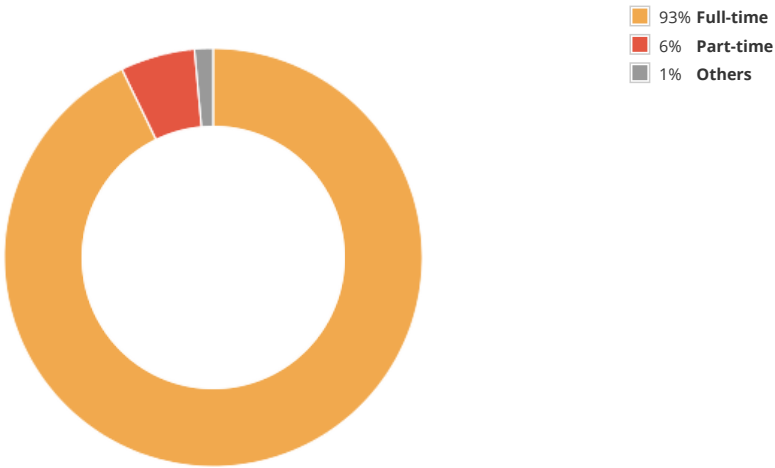
[2 Agree](#)

The causeway needs to be raised (including adding a protected pedestrian path) and the bridge needs to be replaced immediately. These are extreme public safety issues.

one month ago

[1 Agree](#)

8. Are you a full-time, part-time, or seasonal resident of New Castle?



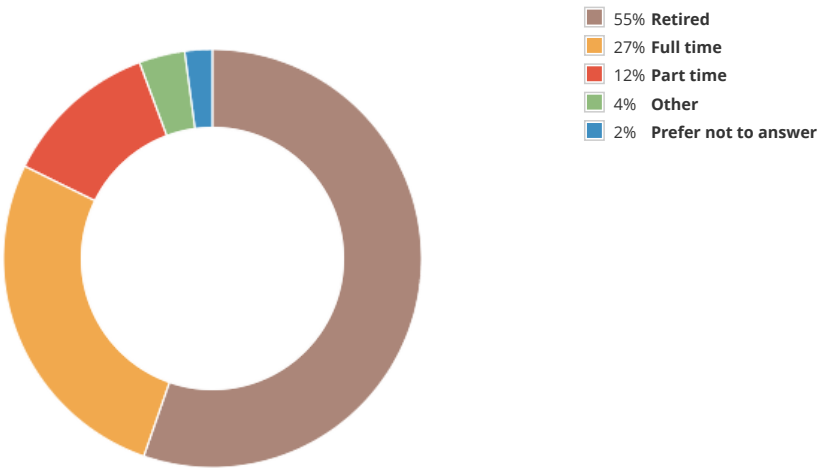
139 respondents

9. Do you live in, own property in, or have a business in New Castle? Please select all that apply.

90%	I own property in New Castle.	125 ✓
25%	I have lived in New Castle for 10-20 years	35 ✓
25%	I have lived in New Castle for more than 20 years.	35 ✓
22%	I have lived in New Castle for 5 -10 years.	31 ✓
11%	I have lived in New Castle for 5 years or less	15 ✓
5%	I rent property in New Castle.	7 ✓
4%	I own a business in New Castle.	6 ✓

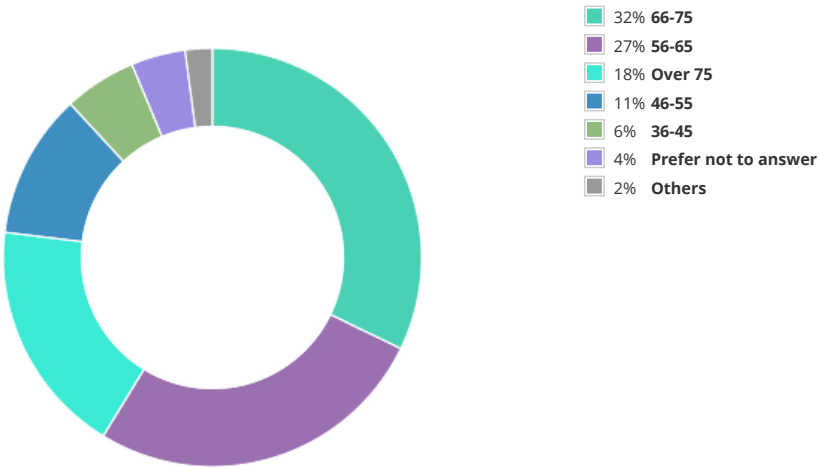
139 Respondents

10. Which of the following best describes your employment situation?



141 respondents

What is your age?



143 respondents

Loading more report objects...