



New Castle Rising Waters Workshop

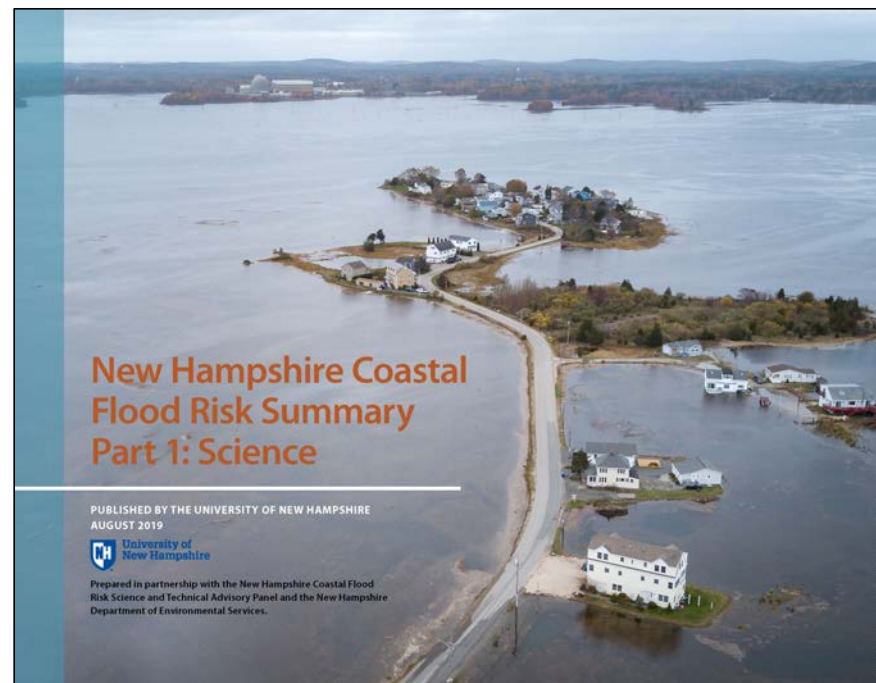
Nov. 3, 2021

Agenda

- Introductions
- NH Coastal Flood Risk Summary, Part I: Science (2019)
- New Castle-specific maps
- NH Coastal Flood Risk Summary, Part II: Guidance for Using Scientific Projections (2020)
- Discussion
- Next steps



NH Coastal Flood Risk Summary, Part I





Mean Higher-High Water (MHHW)



Mean Higher-High Water (MHHW) +1' sea-level rise



Mean Higher-High Water (MHHW) +2' sea-level rise



Mean Higher-High Water (MHHW) +4' sea-level rise



Mean Higher-High Water (MHHW) +6' sea-level rise



Mean Higher-High Water (MHHW) +8' sea-level rise



Mean Higher-High Water (MHHW) + 1% storm surge baseline



Mean Higher-High Water (MHHW) + 1% storm surge baseline + 2' sea-level rise



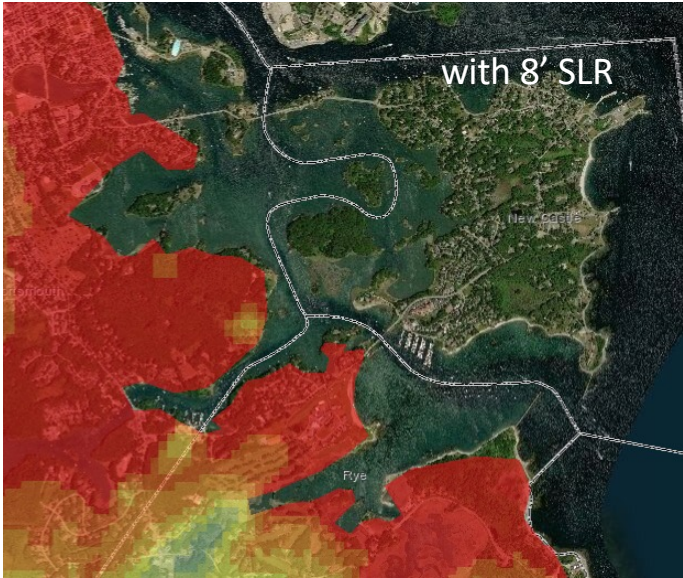
Mean Higher-High Water (MHHW) + 1% storm surge baseline +4' sea-level rise



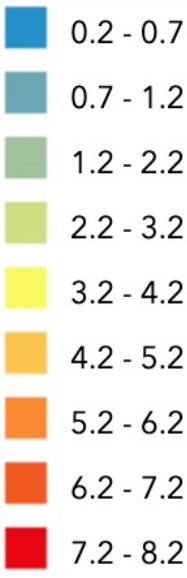
Mean Higher-High Water (MHHW) + 1% storm surge baseline +6' sea-level rise



Mean Higher-High Water (MHHW) + 1% storm surge baseline +8' sea-level rise



Groundwater
Rise (ft)

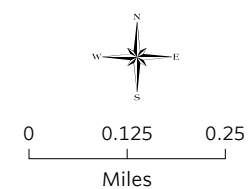




Land Conservation for Water Resource Protection

Flood Risk Reduction Opportunity Areas

New Castle,
New Hampshire



Legend

- Salt Marsh Migration Opportunity Area
- Conservation Land
- Public/Other Land
- Municipal Boundary
- Surface Water or Wetland
- Estuary
- Freshwater Wetland
- Open Water

Map created 4/17/2019 by:
The Nature Conservancy
New Hampshire

Data displayed from NH GRANIT,
NHDES, & The Nature Conservancy.

© 2019 THE NATURE CONSERVANCY. All rights reserved. This map is for informational purposes only and does not constitute an offer of insurance or any other financial product.

NH Coastal Flood Risk Summary, Part II





Discussion

- How do you think New Castle can use this information?
- Was there anything on the maps that caught your attention/surprised you?

Next steps

- We'll follow up with the links and resources shared today
- Please reach out with any questions or further ideas:
Lisa.Wise@unh.edu / Amanda.Stone@unh.edu